

SURVEYOR'S CERTIFICATE

This map correctly represents a survey made by me or under my direction in conformance with the requirements of the Land Surveyor's Act at the request of Leroy R. Guist in July 1967.

THOMAS B. HENDERSON, R.C.E. 14865

Thomas B. Henderson

COUNTY SURVEYOR'S CERTIFICATE

This map has been examined for conformance with the requirements of the Land Surveyor's Act this 24th day of July, 1967.

JAMES T. POTT, County Surveyor

By Deputy, James T. Pott

RECORDER'S CERTIFICATE

File No. 3258079, Fee \$5.00 paid Filed for record this 25th day of July, 1967, at 2:18 P.M., in Book 225 of Maps at page 4, at the request of Thomas Henderson and Associates.

GEORGE E. FOWLES, County Recorder

By Deputy, George E. Fowles

RECORD OF SURVEY

FOR LEROY R. GUIST
BEING A PORTION OF THE SE 1/4 OF SEC. 11, T8S., R2W., M.D.B. & M.

SARATOGA, CALIFORNIA

Scale: 1" = 50'

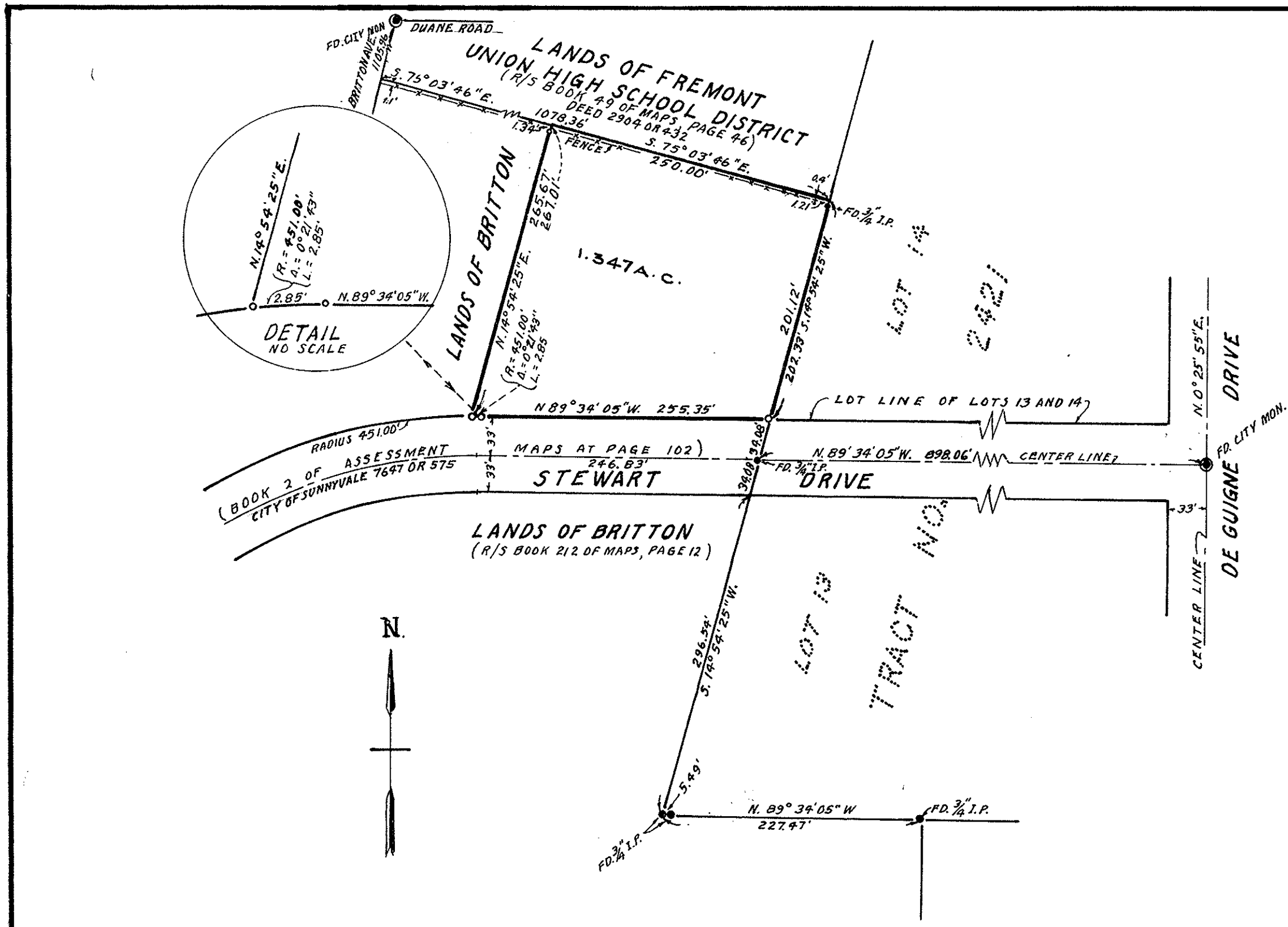
July, 1967

THOMAS HENDERSON & ASSOCIATES

Civil Engineers

Cupertino

California



BASIS OF BEARINGS

The bearing, N. 89° 34' 05" W., as used for the south line of Lot 13 delineated and shown upon that certain map entitled "Tract No. 2421, International Science Center" filed in Book 108 of Maps at page 53, County Recorder's office, Santa Clara County, California, is used as the basis of bearing for this survey.

NOTES AND LEGEND

All distances are in feet and decimals thereof.
— Indicates monument found as noted
— Indicates 3/4" iron pipe set

RECORD OF SURVEY

OF A PORTION OF LANDS SHOWN ON MAP SHOWING
THE PARTITION OF THE LANDS OF HEIRS OF EPHRIAM
BRITTON DEC'D. IN THE RANCHO PASTORIA DE LAS BORREGAS.

SUNNYVALE, CALIFORNIA.

SCALE: 1" = 100'

MARCH 1967

GLEN D. HAGEY

CIVIL ENGINEERING
BURLINGAME, CALIFORNIA.

SURVEYOR'S CERTIFICATE

This map correctly represents a survey made by me or under my direction in conformance with the requirements of the Land Surveyor's Act at the request of Lewis H. Britton, March 1967.

GLEN D. HAGEY, R.C.E. 3039

COUNTY SURVEYOR'S CERTIFICATE

This map has been examined for conformance with the requirements of the Land Surveyor's Act this 27th day of JULY, 1967.

JAMES T. POTT, County Surveyor.

by Deputy, James T. Pott

RECORDER'S CERTIFICATE

File No. 3249863, Fee \$5.00 Paid Filed for record this 10th day of JULY, 1967, at 2:54 P.M., in Book 225 of Maps at page 4, at the request of Glen D. Hagey.

GEORGE E. FOWLES, County Recorder

by Deputy, George E. Fowles