

# RECORD OF SURVEY

## 34 - 76

① 1246-50.675 38.712L 2000' N 661945.954 E 2121532.423	② 1246-99.057 27.418 L 2000' N 661990.688 E 2121500.861
② 1246-60.379 28.510 L 2000' N 661960.672 E 2121530.544	③ 1246-99.060 37.423LT 2000' N 661983.928 E 2121493.485 EL - 2072.996
③ 1246-68.963 28.308L 2000' N 661966.982 E 2121523.595	④ 1246-99.070 73.267 LT. 5/8" REBAR W/ PLASTIC CAP "LS 4587" PER R/S 34-64 N 661959.711 E 2121467.060
④ 1246-83.767 15.224 LT. 5/8" REBAR W/ PLASTIC CAP "LS 4587" PER R/S 34-64 DESTROYED N 661987.375 E 2121520.991	⑤ 1246-58.262 88.147 LT. 5/8" REBAR W/ PLASTIC CAP "LS 4587" PER R/S 34-64 N 661913.369 E 2121494.139
⑤ 1246-99.053 15.224 LT. 5/8" REBAR W/ PLASTIC CAP "LS 4587" PER R/S 34-64 DESTROYED N 661998.927 E 2121509.851	⑥ 1246-41.556 58.002 LT. 5/8" REBAR W/ PLASTIC CAP "LS 4587" PER R/S 34-64 N 661924.222 E 2121529.055

### NOTE:

ALL DISTANCE VALUES SHOWN ARE IN METERS AND ARE GRID DISTANCES ON THE CALIF. COORDINATE SYSTEM 1983 (1986), ZONE 3. TO OBTAIN A GROUND LEVEL DISTANCE, DIVIDE THE GRID DISTANCE BY THE COMBINED GRID FACTOR. TO CONVERT METERS TO U.S. SURVEY FEET, MULTIPLY DISTANCE BY 3937/1200.

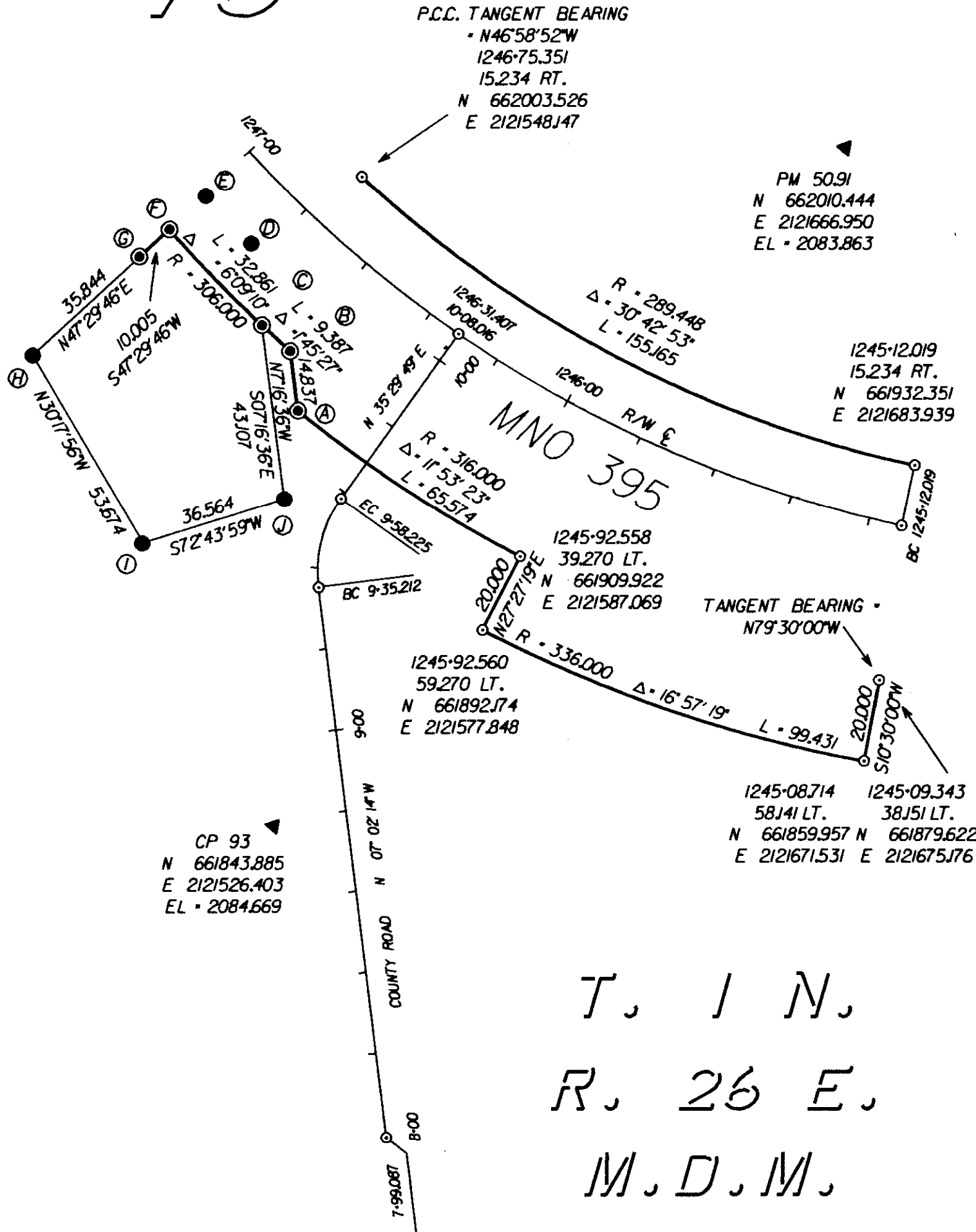
COMBINED GRID FACTOR: 0.99961137

### R/W CENTERLINE

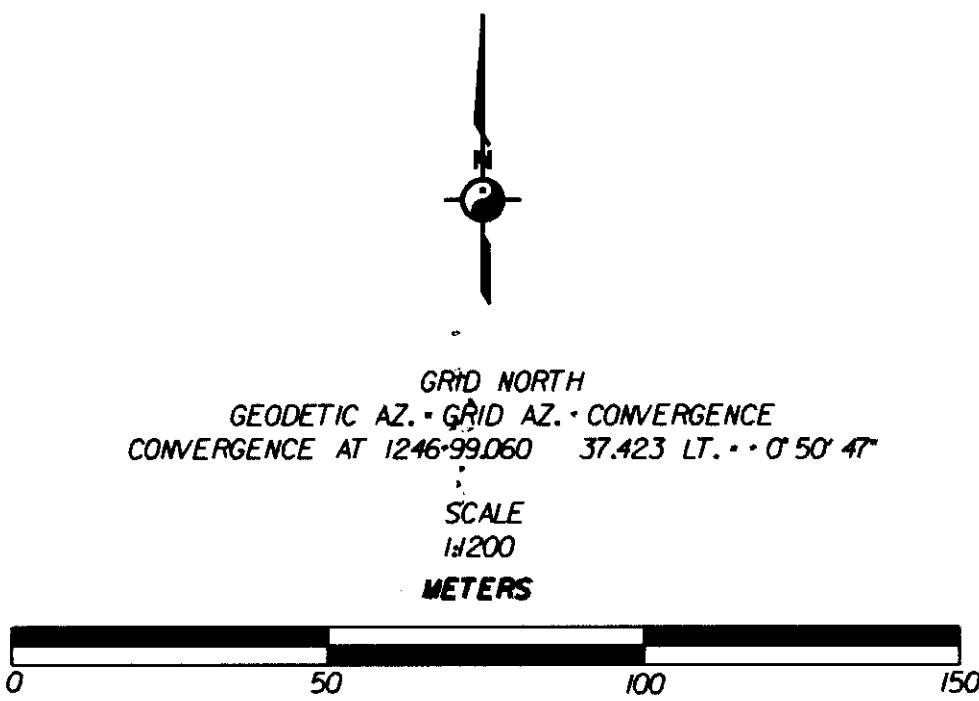
1240-69.304 E.C. N 661823.123 E 2122113.239	1245-12.019 B.C. N 661917.467 E 2121680.692	Δ - 69° 57' 26" R - 304.682 L - 372.013
1248-84.032 E.C. N 662174.124 E 2121443.713	1249-87.530 B.C. N 662276.680 E 2121429.777	Δ - 23° 23' 35" R - 761.705 L - 310.992
1252-98.522 E.C. N 662567.919 E 2121327.015	1260-40.844 P.O.T. N 663203.334 E 2120943.233	

### CONSTRUCTION CENTERLINE NORTH OF TIOGA PASS ROAD NOT DEPICTED ON PLAT

241-30.000 P.O.T. N 661841.644 E 2122050.197	245-05.661 B.C. N 661910.103 E 2121680.826	Δ - 71° 45' 41" R - 285.000 L - 356.954
248-62.616 E.C. N 662151.954 E 2121450.359	250-27.080 B.C. N 662314.921 E 2121428.213	Δ - 13° 20' 17" R - 306.000 L - 712.35
250-98.315 E.C. N 662383.760 E 2121410.528	251-67.203 B.C. N 662448.039 E 2121385.755	Δ - 10° 03' 17" R - 761.705 L - 133.669
253-00.873 E.C. N 662567.920 E 2121327.015	260-43.193 P.O.T. N 663203.334 E 2120943.233	



T. 1 N.  
R. 26 E.  
M.D.M.  
SEC. 16



### LEGEND

- ◆ FOUND LAND NET CORNER, AS NOTED
- FOUND MONUMENT, AS NOTED
- ▲ PROJECT CONTROL MONUMENT, 3/4 INCH REBAR WITH CALTRANS ALUMINUM CAP, MARKED AS SHOWN
- ⊙ SET R/W MONUMENT, 3/4 INCH REBAR WITH CALTRANS ALUMINUM CAP, MARKED AS SHOWN
- ⊗ CALCULATED POINT, NOTHING SET.
- SIX INCH SQUARE, CONCRETE, TYPE "C" RIGHT-OF-WAY MONUMENT.
- RIGHT-OF-WAY PER CALTRANS RIGHT-OF-WAY RECORD MAPS.
- N.G.S. MONUMENT, AS NOTED.
- ⊗ BENCH MARK, AS NOTED.

