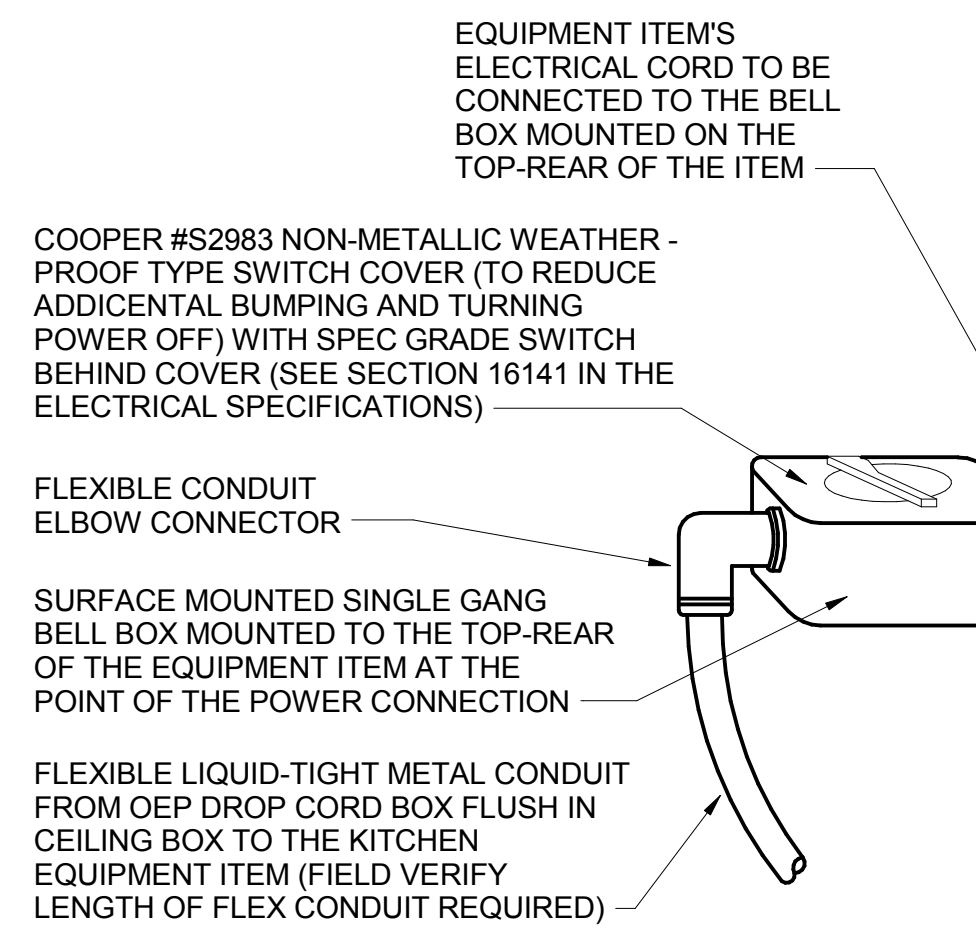
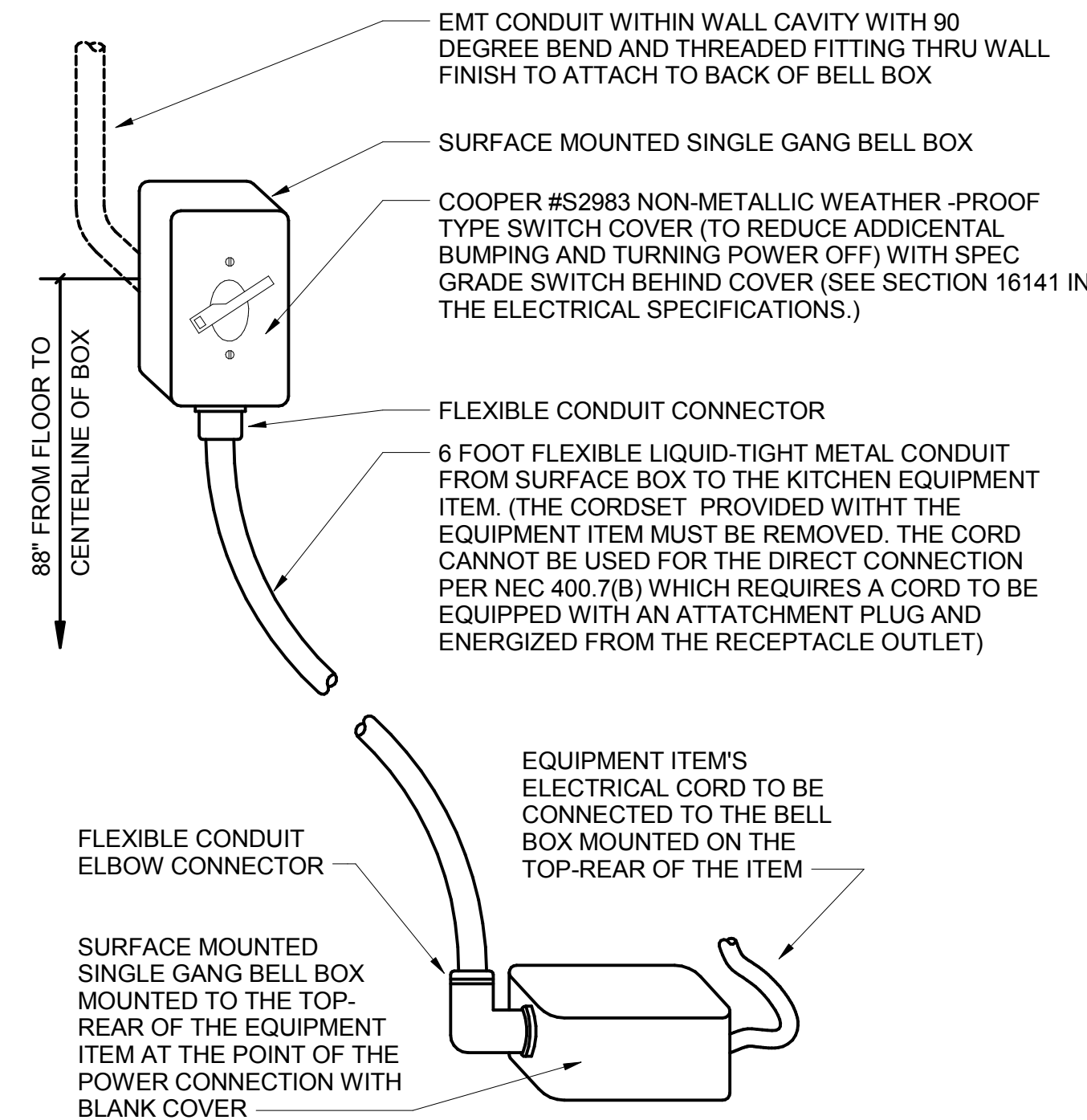


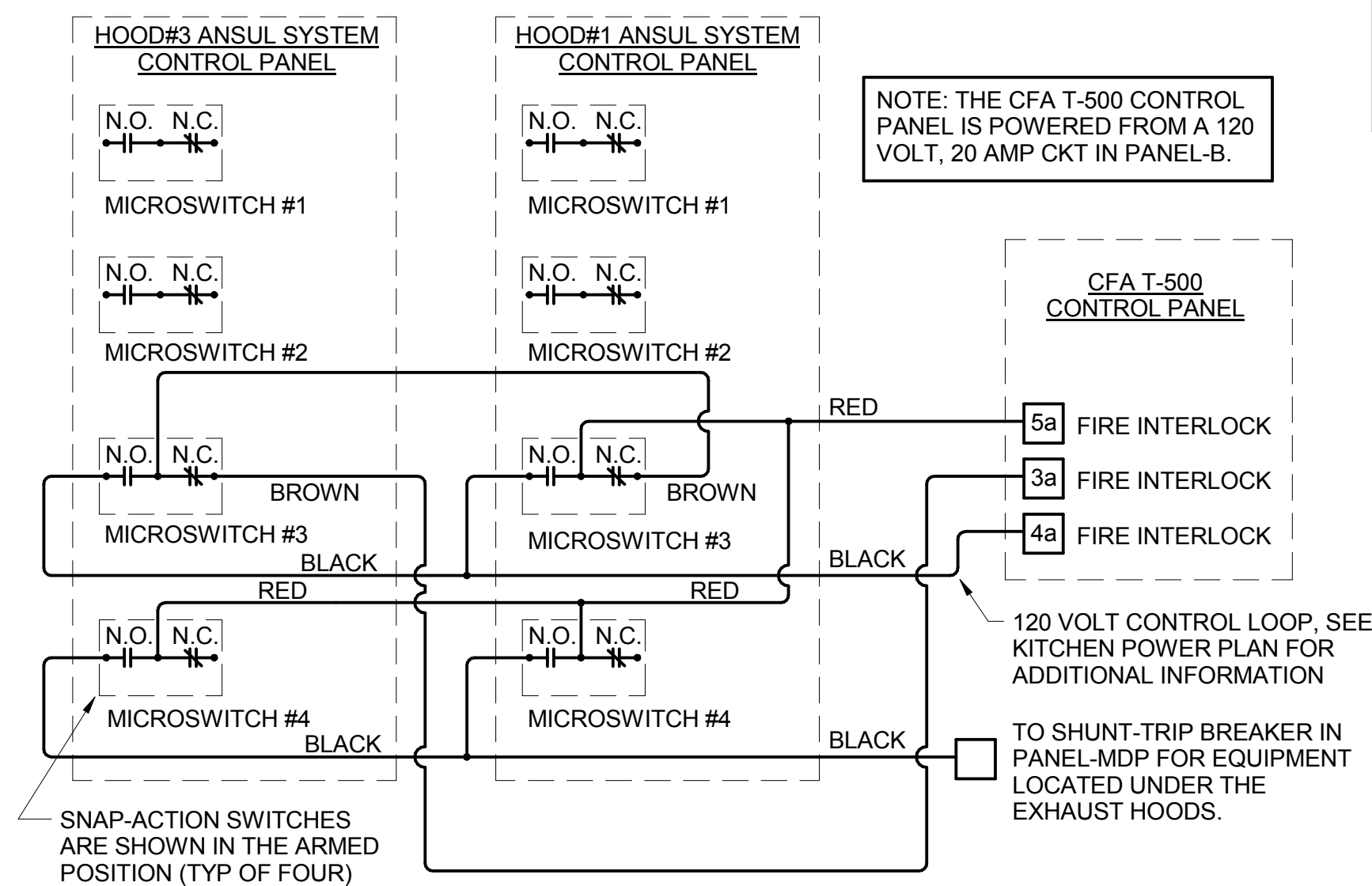
**D4 INTERIOR PVC CONDUIT DETAIL**  
NO SCALE



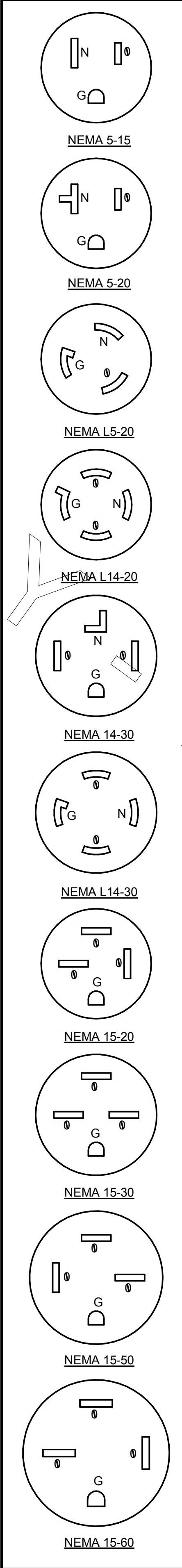
**C4 DIRECT CONNECTION - ISLAND LOCATION**  
NO SCALE



**B4 DIRECT CONNECTION - WALL LOCATION**  
NO SCALE



**A3 ANSUL SYSTEM PANEL WIRING DIAGRAM**  
NO SCALE



## KITCHEN EQUIPMENT SCHEDULE - CHICK-FIL-A P12 EDITION

VERIFY THE QUANTITY AND ROUGH-IN OF EACH EQUIPMENT ITEM WITH THE KITCHEN EQUIPMENT SCHEDULE ON SHEETS K201 AND K202

SCHEDULE NOTES	EQUIP. NO.	BLDG TYPE				EQUIPMENT DESCRIPTION	ELECTRICAL LOAD				NEMA CONFIG		COOPER/ARROW HART (UON) RECEPT CATALOG NO.	Wire/Conduit MARK NO.	COMMENTS AND REMARKS	
		LS	LE	LC	SE		VOLTS	PH	WIRES	KW	AMPS	WALL				DROP-CORD
	120	X	X	X	X	HOT HOLDING CL TABLE	208	3	4	5.040	22/12.5/7.5	DIRECT	-	18	LISTED LOAD INCLUDES PLUG-IN ITEMS	
	120a	X	X	X	X	COLD CL TABLE	208	3	4	3.280	6.5/13.3/7.83	DIRECT	-	18	LISTED LOAD INCLUDES PLUG-IN ITEMS	
	120c	X	X	X	X	TOASTER CL TABLE	208	3	4	18.600	56.6/41.6/56.6	DIRECT	-	18	LISTED LOAD INCLUDES PLUG-IN ITEMS	
	120d	X	X	X	X	CL UNDERCOUNTER REFRIG	120	1	2	0.580	5.0	N/A	FURNISHED IN #120a	-		
	500A	X	X	X	X	VERTICAL CONTACT TOASTER	120	1	2	1.800	15.0	N/A	FURNISHED IN #120c	-		
	500B	X	X	X	X	RADIANT TOASTER	208	1	3	5.000	24.0	N/A	FURNISHED IN #120c	-		
	550	X	X	X	X	DOUBLE WARMING DRAWER	120	1	2	0.900	7.83	N/A	FURNISHED IN #120	-		
	564	X	X	X	X	PRODUCT HOLDING CABINET	120	1	2	1.600	13.3	N/A	FURNISHED IN #120a	-		
	180	X	X	X	X	ORDER REGISTER (POS)	120	1	2		0.7	5-20R	N/A	IG5362RN (ORANGE)	1-G	
	182	X	X	X	X	RECEIPT PRINTER	120	1	2		0.18	5-20R	N/A	IG5362RN (ORANGE)	1-G	
	183	X	X	X	X	ORDER MONITOR	120	1	2		0.125	5-20R	5-20R	IG5362RN (ORANGE)	1-G	
NOTE 2 OR 5	184	X	X	X	X	IPAD	120	1	2	0.120	1.0	5-20R	5-20R	VG20	1	
NOTE 2	190	X	X	X	X	DRIVE-THRU VIDEO MONITOR	120	1	2		0.8	5-20R	N/A	CR20	1	
NOTE 5	211b	X	X	X	X	FLY SYSTEM - KITCHEN AREA	120	1	2	0.078	0.650	5-15R	N/A	TR780W (DUPEX)	1	CLOCK STYLE RECEPTACLE REQ'D
	211c	X	X	X	X	FLY SYSTEM - DINING AREA	120	1	2	0.030	0.25	5-15R	N/A	TR780W (DUPEX)	1	CLOCK STYLE RECEPTACLE REQ'D
	269	X	X	X	X	ANSUL FIRE SYSTEM	120	1	2		VERIFY	DIRECT	N/A	-	1	FED FROM CFA-T500 PANEL
	270	X	X	X	X	ANSUL FIRE SYSTEM	120	1	2		VERIFY	DIRECT	N/A	-	1	FED FROM CFA-T500 PANEL
NOTE 2	300a	X	X	X	X	MILKSHAKE DISPENSER	120	1	2		4.0	5-20R	N/A	1877 (SIMPLEX)	1	
	300X	X	X	X	X	DOUBLE BARREL ICE DREAM	208	3	3		15.0	15-20R	N/A	HUBBELL HBL8420	2	FURNISHED WITH ANGLE PLUG
	308	X	X	X	X	COFFEE BREWER	208	3	3		19.0	15-30R	N/A	HUBBELL HBL8430A	8	FURNISHED WITH ANGLE PLUG
NOTE 2	305	X	X	X	X	TEA BREWER	120	1	2	1.650	13.8	5-20R	N/A	VG20	1	
	308	X	X	X	X	COFFEE BREWER	208	1	3	4.000	19.2	L14-30R	N/A	CWL1430R	8	
	308d	X	X	X	X	DRY & DAIRY DISPENSER	120	1	2		1.0	5-20R	N/A	CR20	1	
NOTE 2	310	X	X	X	X	DOUBLE JUICE DISPENSER	120	1	2		8.2	5-20R	N/A	1877 (SIMPLEX)	1	
	315W	X	X	X	X	DRINK TOWER	120	1	2		10.0	5-20R	N/A	CR20	1	
NOTE 2	320	X	X	X	X	TURBO CARBONATOR	120	1	2		6.2	5-20R	N/A	CR20	1	
	363	X	X	X	X	DISHMACHINE	208	3	4		49.0	-	-	DIRECT	18	CONNECT UNITS' FLEXIBLE "WHIP" TO WALL J-BOX
	380A	X	X	X	X	ICE BIN SANITATION SYSTEM	120	1	2	0.010		5-15R	N/A	-	-	PLUGS INTO DUPLEX OF ONE #380Z UNIT
NOTE 5	380Z	X	X	X	X	INTERIOR ICE MAKER	120	1	2		6.0	5-15R	N/A	817 (SIMPLEX) CR15 (DUPEX)	1	
	380ZC	X	X	X	X	ROOF MTD ICE CONDENSER	208	3	4		21.2	DIRECT	N/A	-	12	
NOTE 2	400	X	X	X	X	REACH-IN FRY FREEZER	120	1	2		9.4	5-20R	N/A	VG20	1	
NOTE 5	401	-	-	-	-	48" FRY FREEZER WORK TABLE	120	1	2		8.7	L5-20R	L5-20R	CWL520R	1	PROVIDE TWIST LOCK PLUG IN FIELD
NOTE 5	402	-	-	-	-	60" FRY FREEZER WORK TABLE	120	1	2		8.7	L5-20R	L5-20R	CWL520R	1	PROVIDE TWIST LOCK PLUG IN FIELD
	410	X	X	X	X	WALK-IN FREEZER DOOR HTR/LTG	120	1	2		3.3	DIRECT	-	-	1	REFER TO LIGHTING FLOOR PLAN
	410a	X	X	X	X	WI FREEZER CONDENSER	208	3	3		14.38	DIRECT	-	-	8	
	410b	X	X	X	X	WI FREEZER EVAP COIL	208	1	2		1.5	DIRECT	-	-	1	POWER FED FROM CONDENSER
NOTE 5	420	X	X	X	X	SINGLE UC REFRIGERATOR	120	1	2		4.7	5-20R	L5-20R	1877 (SIMPLEX) / CWL520R	1	
NOTE 2	421	X	X	X	X	DOUBLE UC REFRIGERATOR	120	1	2		6.3	5-20R	L5-20R	1877 (SIMPLEX) / CWL520R	1	
NOTE 2	431	X	X	X	X	REFRIGERATED WORK TABLE	120	1	2		6.3	5-20R	L5-20R	1877 (SIMPLEX) / CWL520R	1	
NOTE 5	432	X	X	X	X	REFRIGERATED WORK TABLE	120	1	2		6.3	5-20R	L5-20R	1877 (SIMPLEX) / CWL520R	1	PROVIDE TWIST LOCK PLUG IN FIELD
NOTE 2	440	X	X	X	X	BREADING TABLE	120	1	2		12.0	5-20R	L5-20R	VG20 / CWL520R	1	
NOTE 5	441	X	X	X	X	REFRIGERATED SALAD PREP	120	1	2		9.0	L5-15R	L5-15R	CWL515R / CWL515C	1	15 AMP TWIST LOCK PLUG PROVIDED W/ EQUIP
	444	X	X	X	X	DOUBLE DOOR THAWING CABINET	120	1	2		16.0	DIRECT	DIRECT	-	1	PROVIDE 6 FT LIQUID-TIGHT FLEX CONDUIT
	444S	-	-	-	-	SINGLE DOOR THAWING CABINET	120	1	2		16.0	DIRECT	DIRECT	-	1	
	449	X	X	X	X	WALK-IN COOLER LIGHTING	120	1	2		2.4	DIRECT	-	-	1	REFER TO LIGHTING FLOOR PLAN
	449a	X	X	X	X	WI COOLER CONDENSER	208	3	3		5.75	DIRECT	-	-	3	
	449b	X	X	X	X	WI COOLER EVAP COIL	208	1	2		1.0	DIRECT	-	-	1	POWER FED FROM CONDENSER
	505	X	X	X	X	CONVECTION OVEN	208	3	3	5.600	24/12/15	15-30R	N/A	AH8430N	9	PROVIDE ANGLE PLUG ON CORDSET
	505G	X	X	X	X	GRIDDLE TOP CONVECTION OVEN	208	3	3	19.800	57.6	15-60R	N/A	AH8460N	17	PROVIDE 6 FT CORD AND ANGLE PLUG
	521	X	X	X	X	WARMING EYES	208	1	3	3.900	18.8	6-30R	N/A	5700N	8	PROVIDE 6 FT CORD AND PLUG
NOTE 3	522	X	X	X	X	OPEN FRYER - ELECTRIC	208	3	3	22.000	61.0	NOTE 3	N/A	-	22	PLUG AND CORD-SET PROVIDED W/ EQUIP
NOTE 3	522A	X	X	X	X	DOUBLE OPEN FRYER - REQUIRES TWO ELECTRICAL CONNECTIONS EACH OF THE SAME LOAD AND CHARACTERISTICS AS #522 ABOVE	208	3	3	13.500	38.0	15-50R	N/A	HUBBELL HBL8450A	14	PLUG AND CORD-SET PROVIDED W/ EQUIP
	523	X	X	X	X	PRESSURE FRYER - ELECTRIC	208	3	3	16.050	43.4/43.4/47	15-50R	N/A	HUBBELL HBL8450A	14	
	524	X	X	X	X	DUAL SIDED CHAR-GRILL	208	3	3	1.840	15.4	5-20R	N/A	1877 (SIMPLEX)	1	
NOTE 2	560	X	X	X	X	FRY HOLDING STATION	120	1	2	1.090	9.13	5-20R	N/A	1877 (SIMPLEX)	1	
NOTE 5	563D	X	X	X	X	DOUBLE SANDWICH SLIDE	120	1	2	0.548	4.56	5-20R	N/A	1877 (SIMPLEX)	1	
NOTE 5	563S	X	X	X	X	SINGLE SANDWICH SLIDE	120	1	2	1.500	12.50	5-20R	L5-20R	VG20 / CWL520R	1	
NOTE 2	565C	X	X	X	X	FOOD COOKER/WARMER	120	1	2	2.880	24.0	L5-30R	L5-30R	CWL530R	7	
	580	X	X	X	X	MULTI-USE HOLDING CABINET	120	1	2		8.0	L5-20R	L5-20R	CWL520R	1	PROVIDE TWIST LOCK PLUG IN FIELD
NOTE 5	600	X	X	X	X	MIXER	120	1	2			5-20R	N/A	VG20	1	PROVIDE GFCI DUPLEX RECEPTACLE
NOTE 5	601	-	-	-	-	NOT USED						5-20R	N/A	CR20	1	
NOTE 2	607	X	X	X	X	JUICER WORK STATION	120	1	2			5-20R	N/A	CR20	1	
	669	X	X	X	X	OFFICE SAFE (SMART SAFE)	120	1	2			5-20R	N/A	CR20	1	
NOTE 2	671	X	X	X	X	SMALL MENU BOARD	120	1	2	0.054	0.45	5-20R	N/A	CR20	1	

WIRING DEVICE PACKAGE, INCLUDING SWITCHES (EXCEPT HUBBELL BRAND DEVICES) SHALL BE PURCHASED AS A PART OF A NATIONAL ACCOUNTS PROGRAM THROUGH GEXPRO (FORMERLY GE SUPPLY). CONTACT BRIAN REECE AT 770-840-4162 (EMAIL: BRIAN.REECE@GEXPRO.COM)

- NOTE 1: ALL SO CORD LENGTHS SHALL BE MEASURED FROM THE REAR OF THE EQUIPMENT TO THE END OF THE CORD.
- NOTE 2: CONTRACTOR SHALL PROVIDE GROUND-FAULT PROTECTION FOR ALL 120 VOLT 15 AMP AND 20 AMP RECEPTACLES IN THE KITCHEN / FOOD PREPARATION AREAS. GROUND-FAULT PROTECTION SHALL BE PROVIDED AT THE RECEPTACLE AS A GFCI TYPE RECEPTACLE UNLESS NOTED OTHERWISE ON THE PLANS WHERE A GFCI TYPE BREAKER IS INDICATED.
- NOTE 3: A RECESSED PIN & SLEEVE BOX IS PROVIDED WITH THE EXHAUST HOOD PACKAGE AND INSTALLED BY THE CONTRACTOR. THE P&S BOX INCLUDES THE "SLEEVE" RECEPTACLES FOR THE OPEN FRYERS. THE OPEN FRYER SUPPLIER WILL PROVIDE PRE-WIRED CORDSET WITH A "PIN" DEVICE INTEGRAL WITH THE OPEN FRYER TO PLUG INTO THE "SLEEVE" RECEPTACLE.
- NOTE 4: WIRE NUMBER INDICATED DOES NOT INCLUDE THE REQUIRED GREEN EQUIPMENT GROUND CONDUCTOR OR, WHEN APPLICABLE, THE STRIPED IG CONDUCTOR.
- NOTE 5: PROVIDE GFCI TYPE BRANCH BREAKER FOR KITCHEN/FOOD PREPARATION AREA RECEPTACLES THAT ARE TWIST-LOCK, CLOCK STYLE, OR IG (ISOLATED GROUND) TYPE.
- NOTE 6: REFER TO THE CONDUIT AND CONDUCTOR SCHEDULE FOR THE WIRE/CONDUIT MARK NUMBER AND THE MINIMUM WIRE AND CONDUIT SIZE FOR EACH EQUIPMENT ITEM.



**Chick-fil-A**  
5200 Buffington Road  
Atlanta, Georgia 30349-2998

**INTERPLAN**

ARCHITECTURE  
ENGINEERING  
INTERIOR DESIGN  
PROJECT MANAGEMENT

604 COURTLAND STREET  
SUITE 100  
ORLANDO, FLORIDA 32804  
PH 407.645.5008  
FX 407.629.9124

SEAL:  
UNLESS THE ARCHITECT'S SIGNATURE AND SEAL APPEAR BELOW:

**CHICK-FIL-A**  
Cherokee Place  
115 Cherokee Place, Cartersville, GA 30121

**FSR# 00534**

REVISION SCHEDULE  
NO. DATE DESCRIPTION

CONSULTANT PROJECT # 2017.0149  
PRINTED FOR BID  
DATE 11.20.17  
DRAWN BY MB

SHEET  
ELECTRICAL SCHEDULES  
AND DETAILS

SHEET NUMBER  
**E-002**