

RECORD OF SURVEY No. 37-13

BEING A SURVEY OF THE NE 1/4 OF THE NW 1/4 OF
SECTION 17, T. 5 S., R. 33 E., M.D.M., COUNTY OF MONO,
STATE OF CALIFORNIA.

THIS MAP CORRECTLY REPRESENTS A SURVEY
MADE BY ME OR UNDER MY DIRECTION IN
CONFORMANCE WITH THE REQUIREMENTS OF
THE LAND SURVEYOR'S ACT AT THE REQUEST
OF RONALD L. HUBBARD IN DECEMBER, 1977.

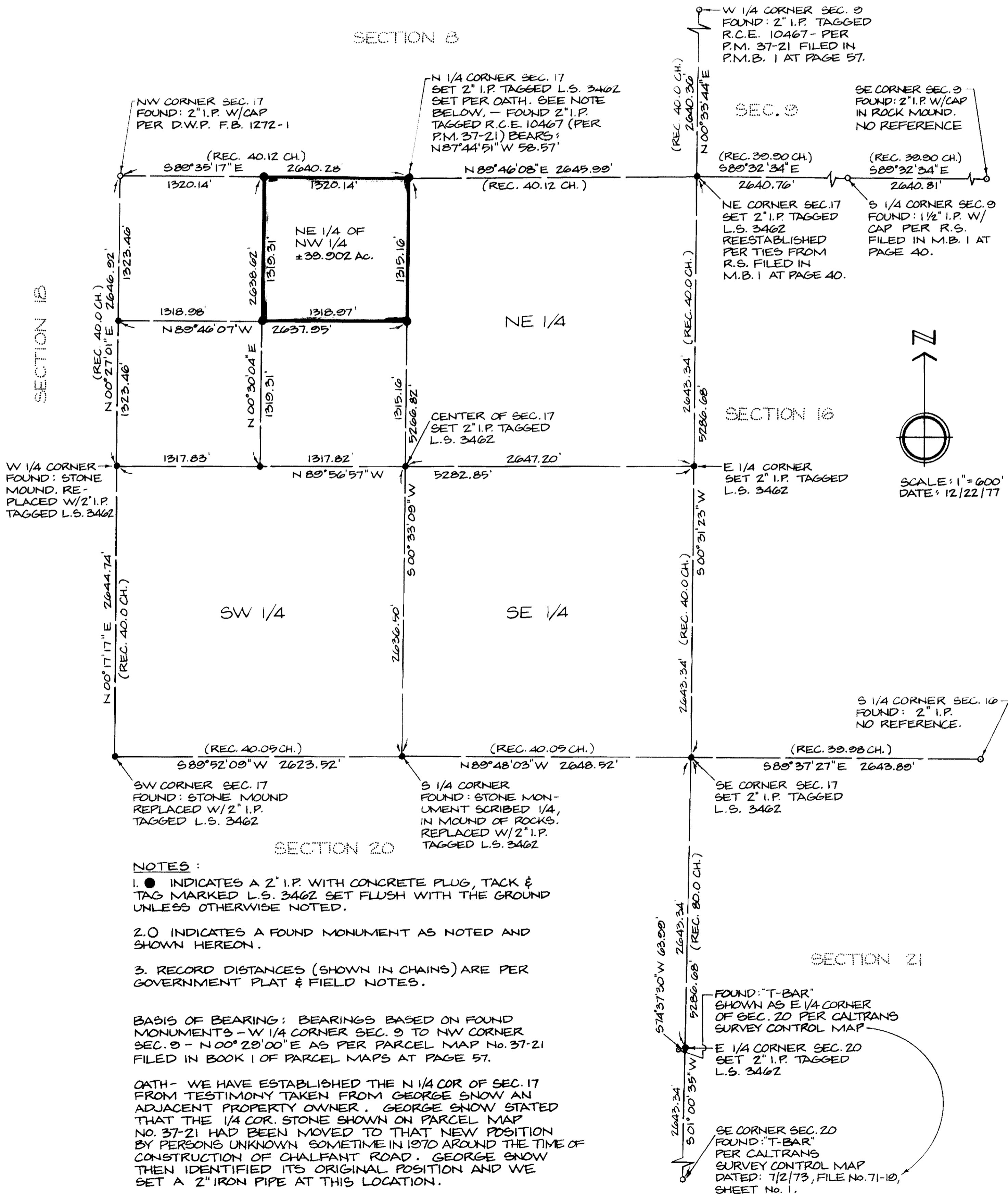
Roger D. Glidden
ROGER D. GLIDDEN
L.S. 3462

THIS MAP HAS BEEN EXAMINED FOR CON-
FORMANCE WITH THE REQUIREMENTS OF
THE LAND SURVEYOR'S ACT THIS 24TH DAY
OF JAN., 1978.

Richard L. Pool
RICHARD POOL
COUNTY SURVEYOR

DOCUMENT No. 4187
FILED THIS 25TH DAY OF JAN., 1978,
AT 4:13 P.M. IN BOOK 1 OF
RECORD OF SURVEY, AT PAGE 36
AT THE REQUEST OF RONALD L. HUBBARD.

Ruby L. Strait
COUNTY RECORDER
By *Ruby L. Strait*
Deputy



Vol. 1 p/s Page 36