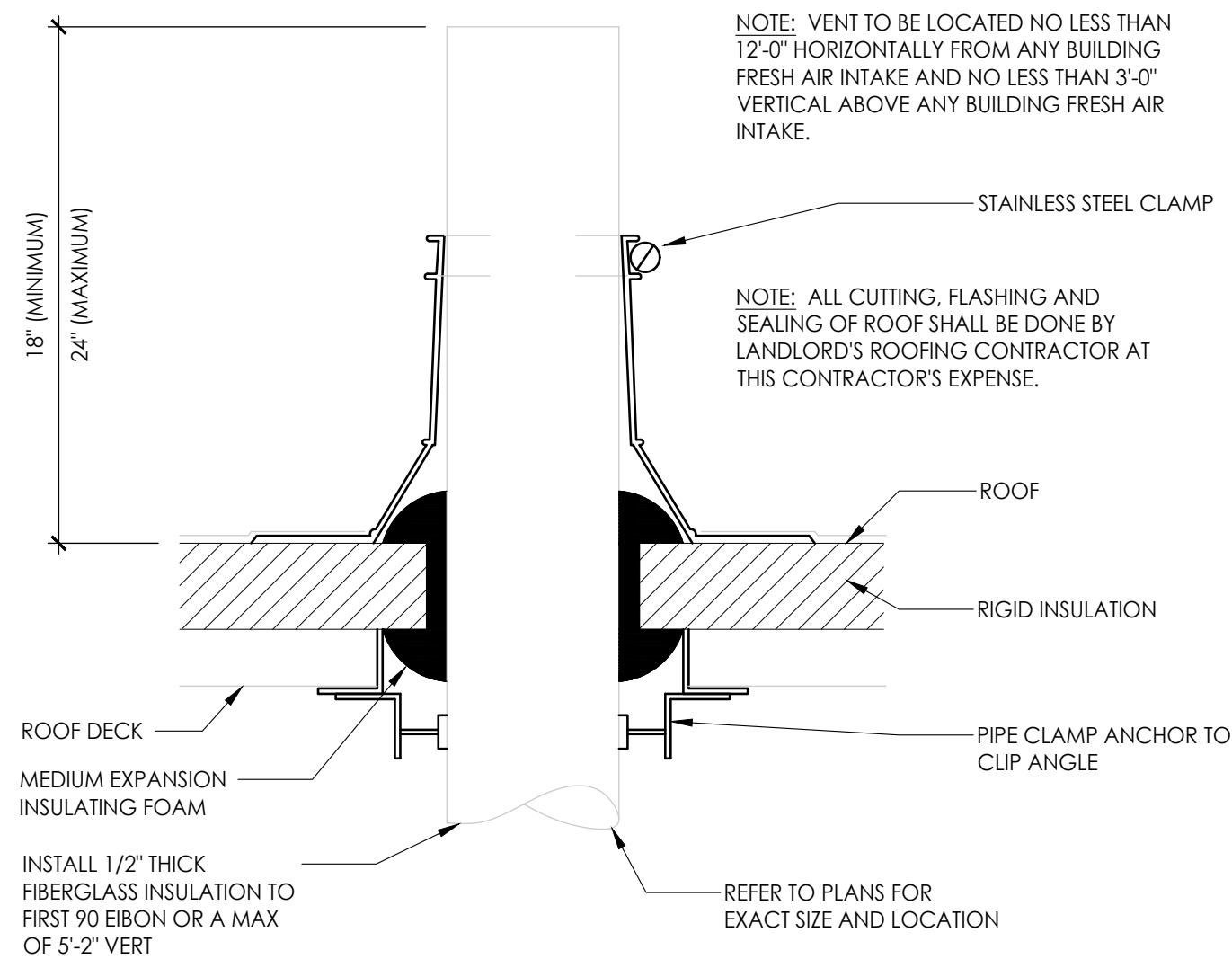
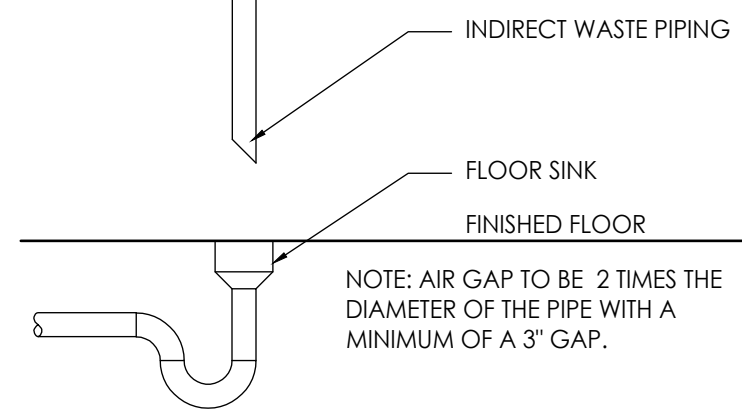


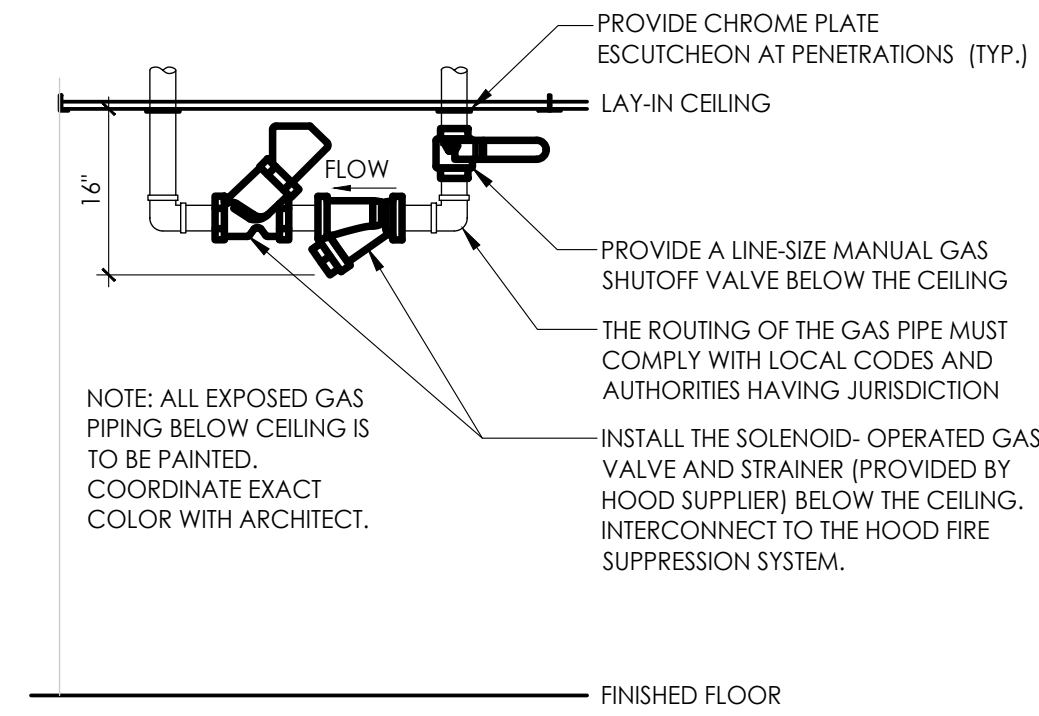
1 WATER HEATER ROOF VENT PENETRATION DETAIL  
N.T.S.



2 VENT THROUGH ROOF DETAIL  
N.T.S.



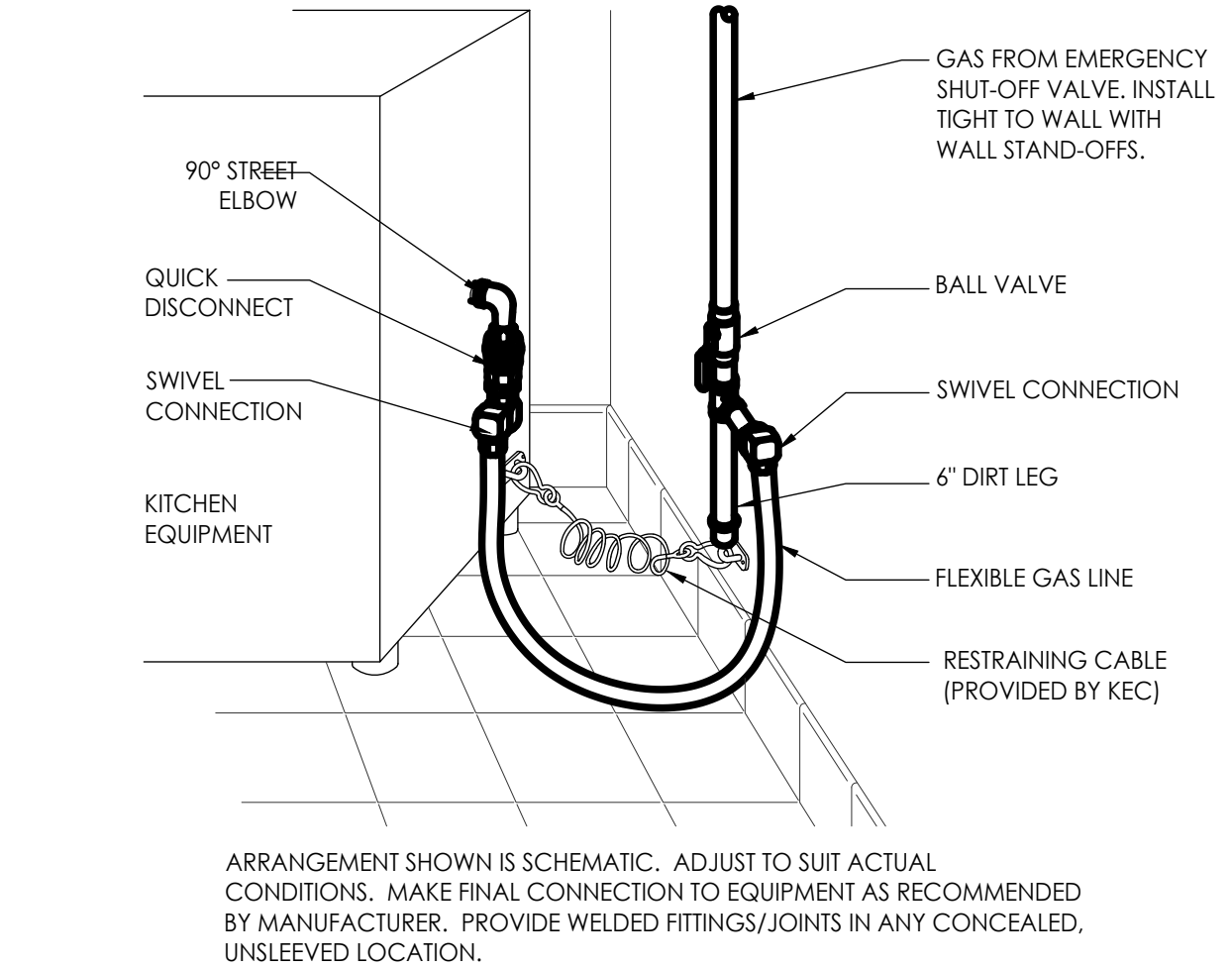
3 FLOOR SINK DETAIL  
N.T.S.



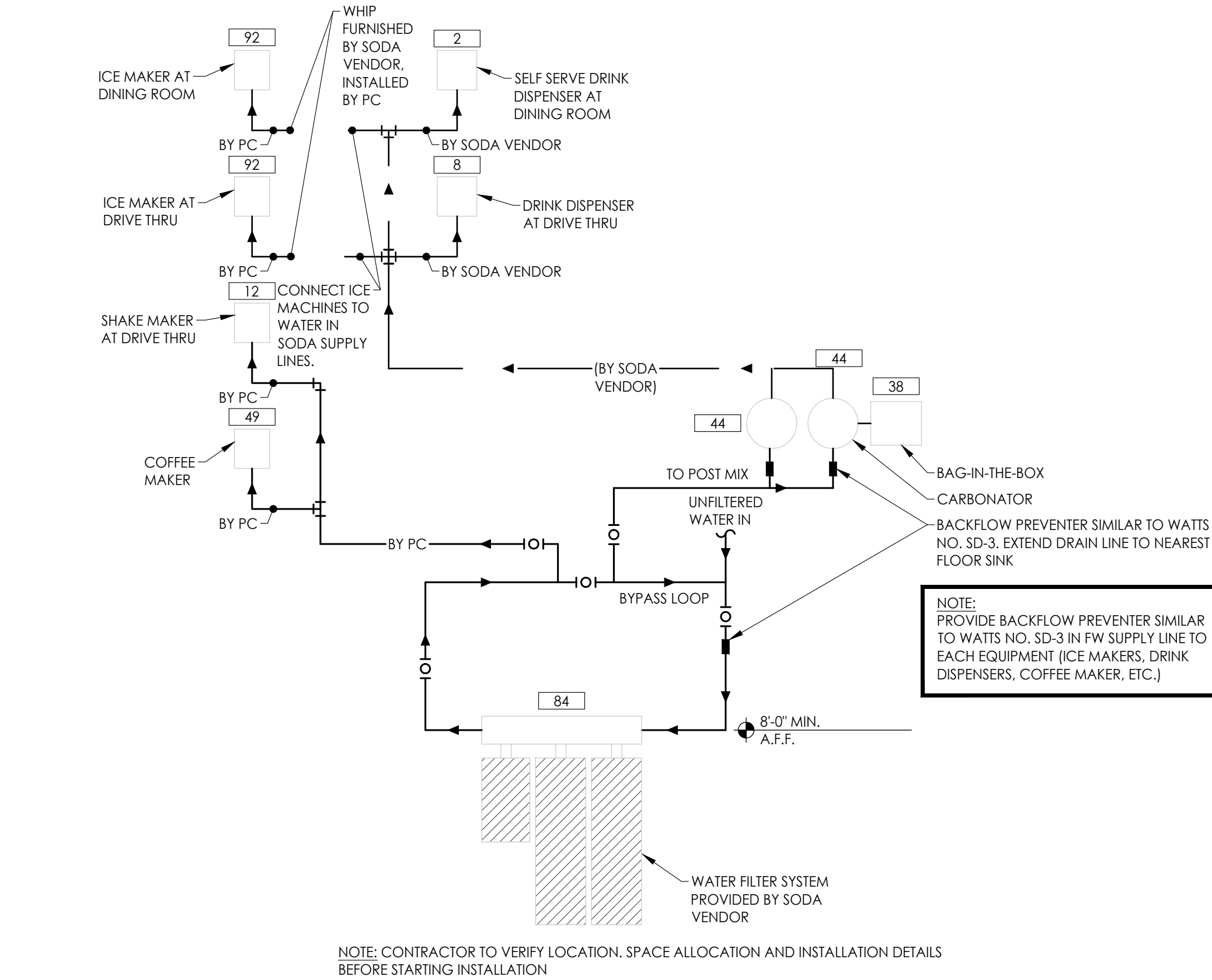
SEQUENCE OF OPERATIONS:

- NORMAL MODE:
- WHEN HOOD FAN IS ENERGIZED, SOLENOID VALVE SHALL OPEN.
  - ON A LOSS OF POWER OR IF THE FAN IS DE-ENERGIZED, THE VALVE SHALL CLOSE.
- EMERGENCY MODE:
- UPON ACTUATION OF THE FIRE SUPPRESSION SYSTEM OR A SIGNAL FROM THE FIRE ALARM, THE SOLENOID VALVE SHALL CLOSE.

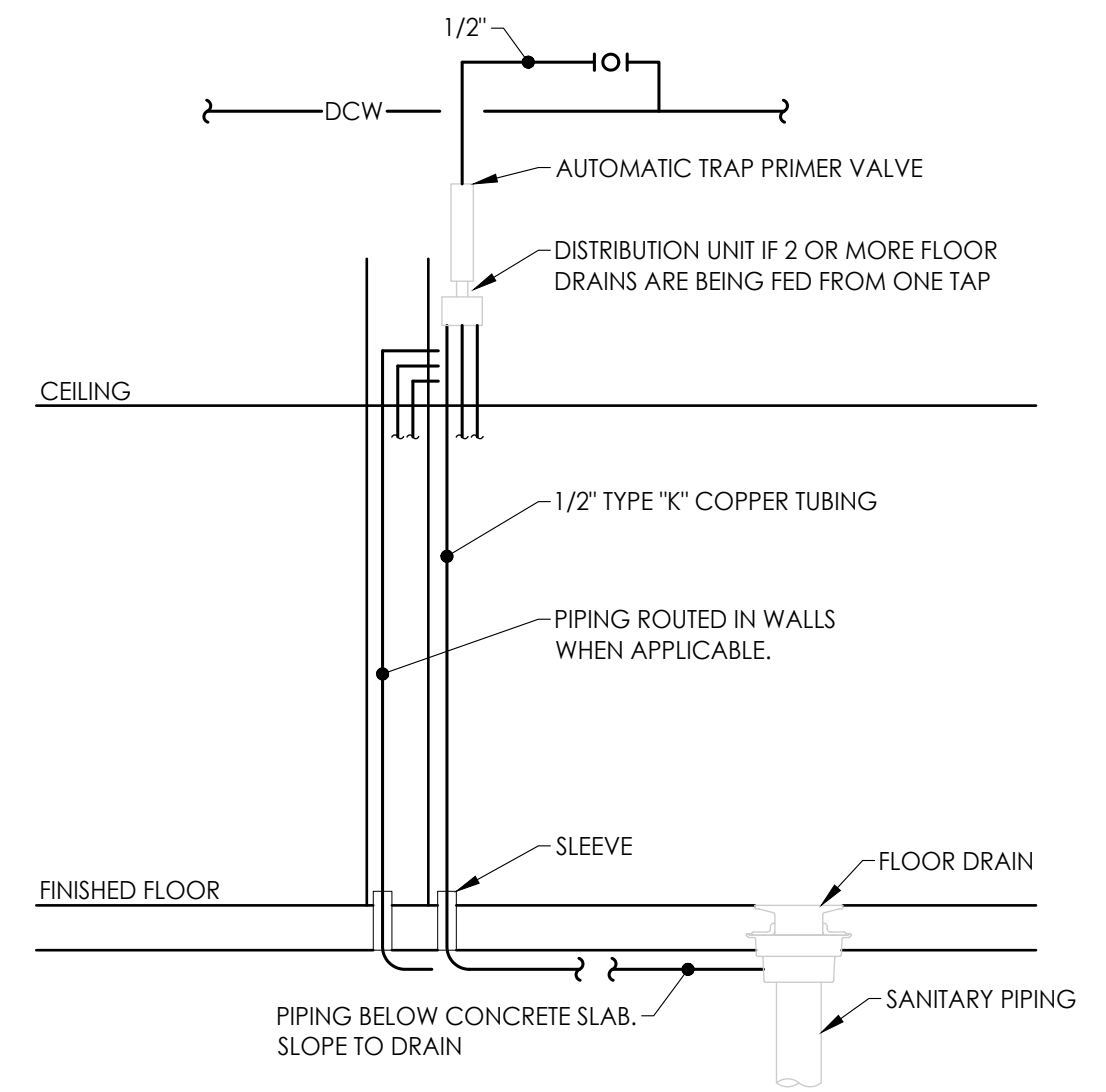
4 KITCHEN EMERGENCY GAS SHUTOFF DETAIL  
N.T.S.



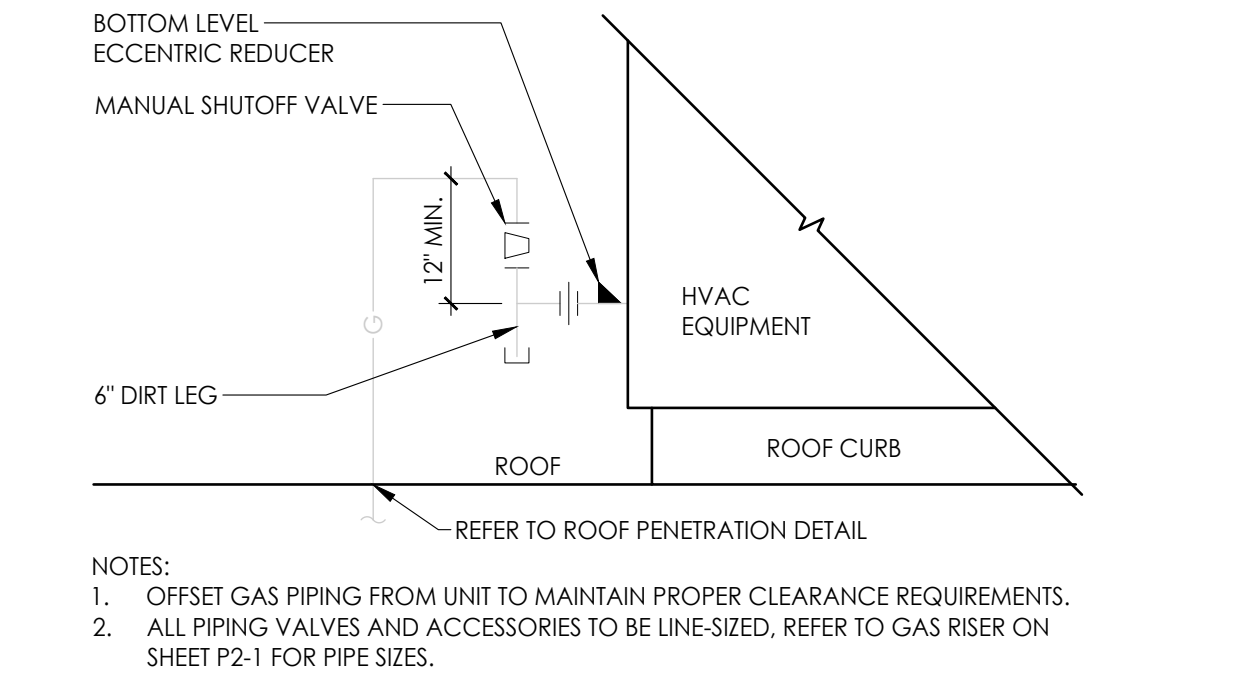
5 KITCHEN GAS CONNECTION DETAIL  
N.T.S.



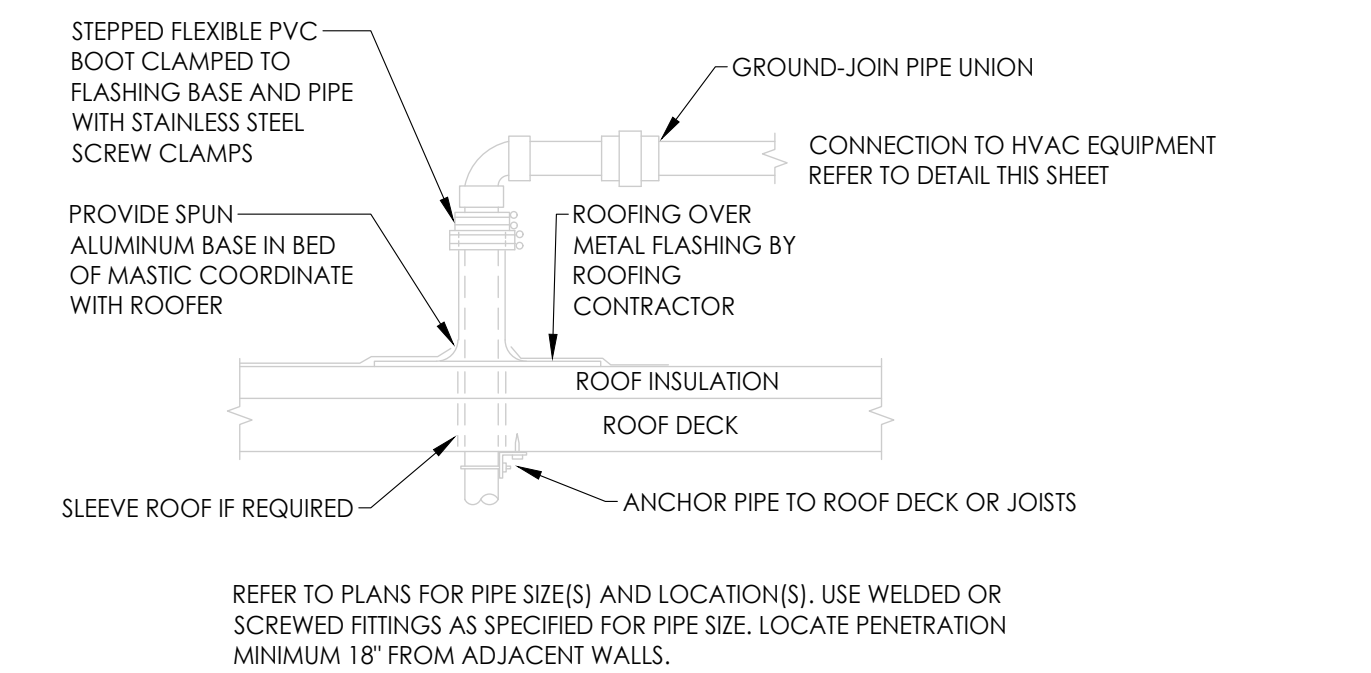
6 WATER FILTER SYSTEM DETAIL  
N.T.S.



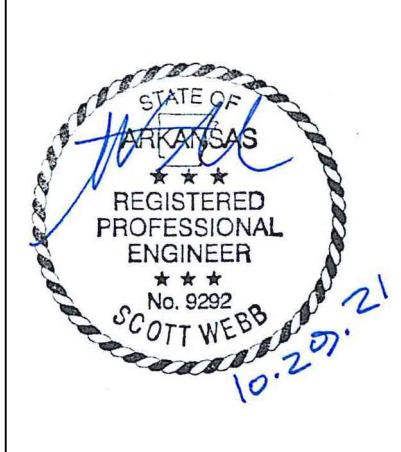
7 TRAP PRIMER DETAIL  
N.T.S.



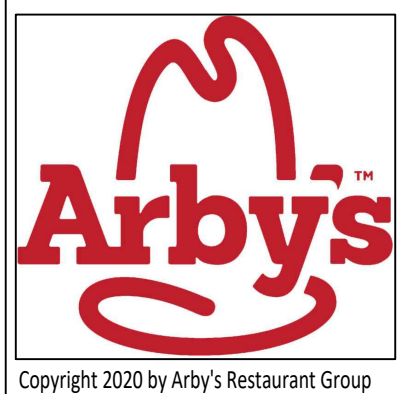
8 RTU GAS CONNECTION DETAIL  
N.T.S.



9 ROOF PENETRATION  
N.T.S.



PROPRIETARY INFORMATION NOTICE:  
THESE PROTOTYPICAL DOCUMENTS MAY REQUIRE REVISIONS TO CONFORM TO LOCAL, STATE, AND FEDERAL CODES, ORDINANCES OR OTHER CONDITIONS. THE DESIGN CONCEPTS EMBODIED IN THESE DOCUMENTS ARE SPECIFICALLY FOR THIS PROJECT. INFORMATION CONTAINED HEREIN REMAINS THE SOLE PROPERTY OF ARBY'S RESTAURANT GROUP, IS CONFIDENTIAL AND PROPRIETARY AND IS NOT TO BE COPIED, REPRODUCED, DISCLOSED OR OTHERWISE TRANSFERRED TO OTHER PARTIES IN ANY FORM WHATSOEVER WITHOUT THE EXPRESS WRITTEN CONSENT OF ARBY'S RESTAURANT GROUP.



ARBY'S RESTAURANT GROUP  
INSPIRE DUAL REGULAR 40 - STANDARD  
1632 AR-25 BYPASS  
HEBER SPRINGS, AR 72543  
FOR  
RB AMERICAN GROUP, LLC  
6200 OAK TREE BLVD., SUITE 250, INDEPENDENCE, OHIO 44131

PROJECT NUMBER:	
ISSUE	DATE
PRELIMINARY	
PERMIT	
BID	
REVISION	

DETAILS - PLUMBING

SHEET:  
  
P4.2