



PANDA EXPRESS, INC.  
1683 Walnut Grove Ave.  
Rosemead, California  
91770  
Telephone: 626.799.9898  
Facsimile: 626.372.8288

All ideas, designs, arrangement and plans indicated or represented by this drawing are the property of Panda Express Inc. and were created for use on this specific project. None of these ideas, designs, arrangements or plans may be used by or disclosed to any person, firm, or corporation without the written permission of Panda Express Inc.

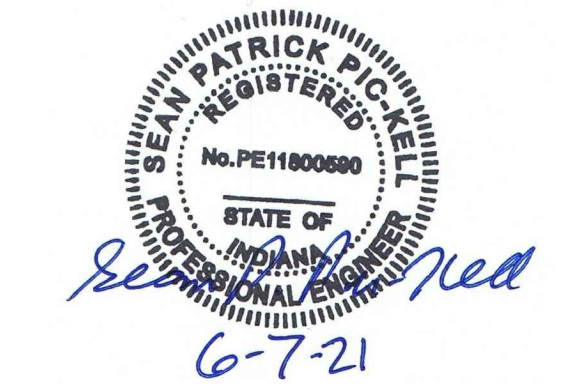
REVISIONS:


ISSUE DATE:

STATE PERMIT	06.07.21

DRAWN BY: G. COLLINS

PANDA PROJECT #: D8060  
ARCH PROJECT #: JCDT20-0240

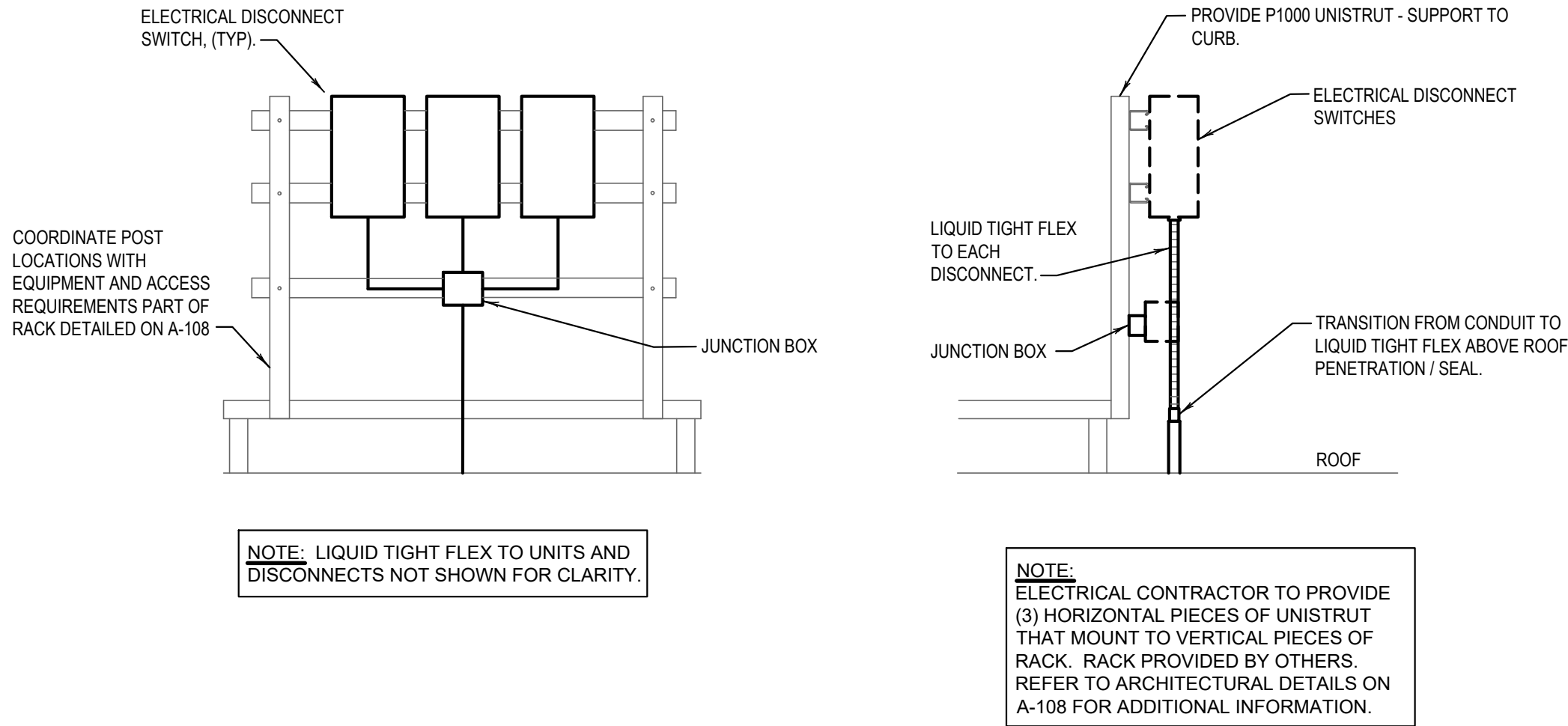


PANDA EXPRESS  
TRUE WARM & WELCOME  
390 W Spring Mill Pointe Dr.  
Westfield, IN 46074

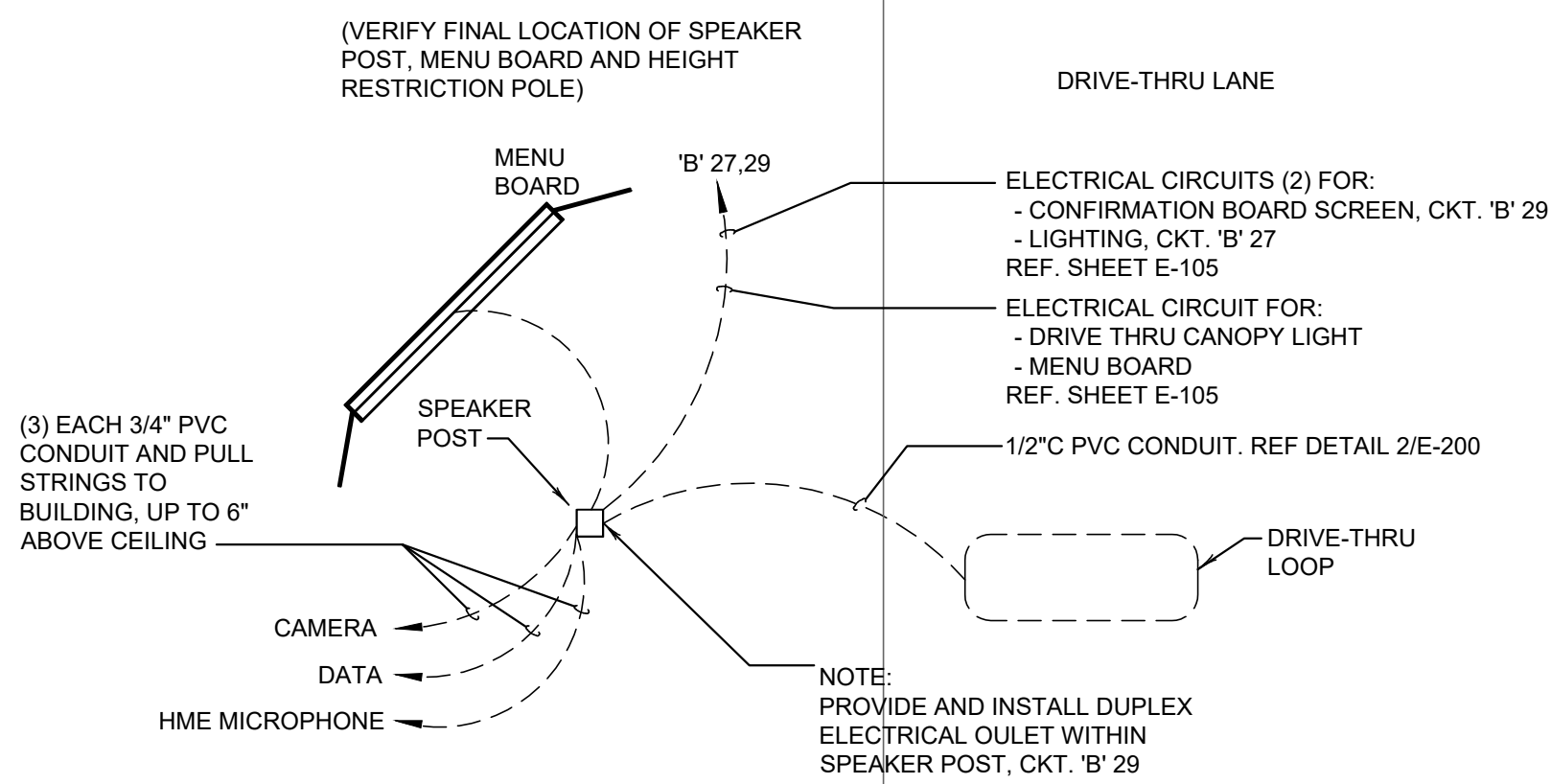
E-401

ELECTRICAL DETAILS, DIAGRAMS

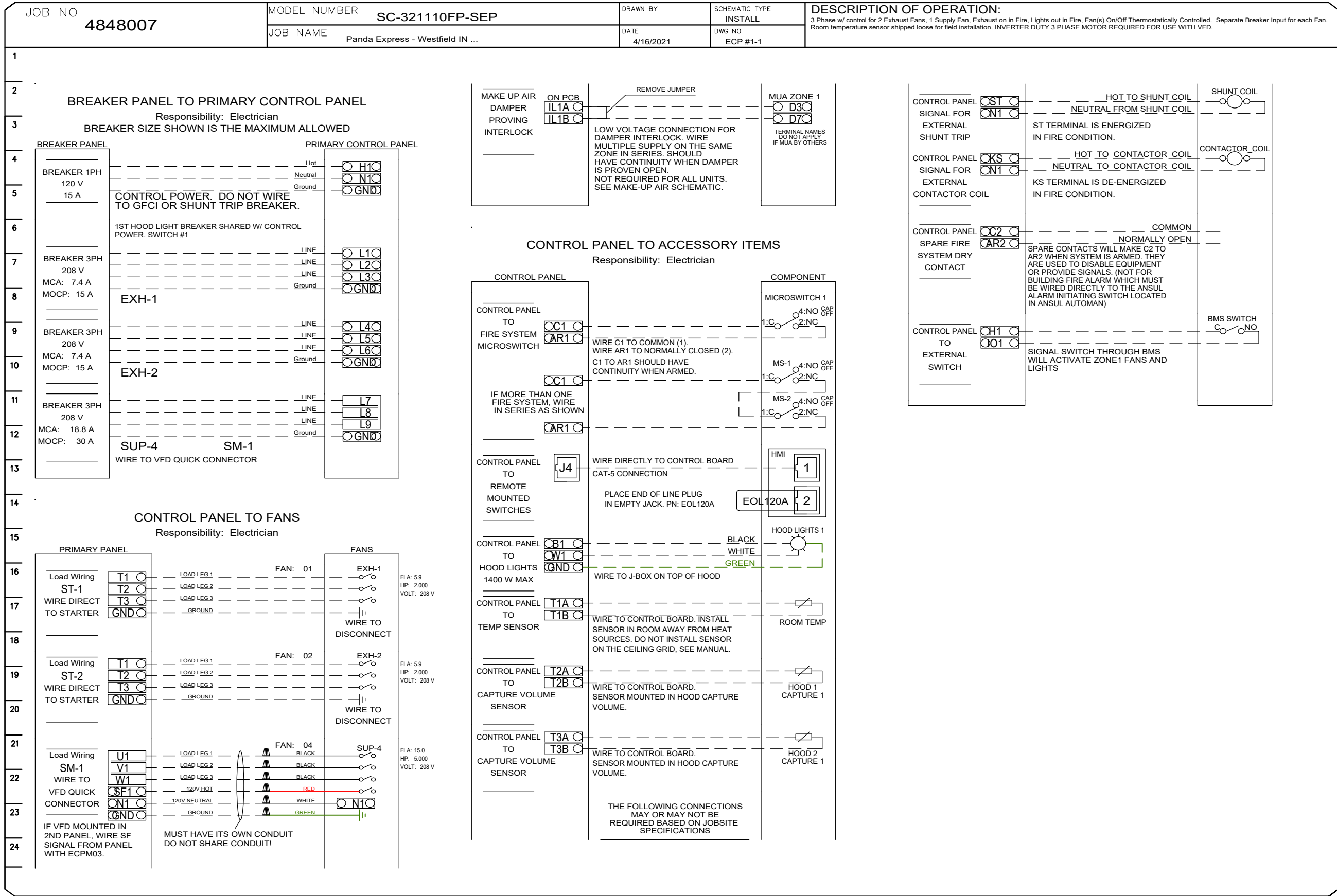
TRUE WARM & WELCOME 2300 R5



EQUIPMENT DISCONNECT SWITCH SUPPORT 2  
NOT TO SCALE E-401



MENU BOARD & SENSOR LOOP 1  
NOT TO SCALE E-401



KITCHEN EXHAUST SYSTEM DIAGRAM 3  
NOT TO SCALE E-401