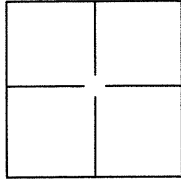


CORNER RECORD

Document Number CR 6343City of PLEASANTONCounty of ALAMEDA, CaliforniaBrief Legal Description LOT 13, TRACT 4119 (106 M 31)**CORNER TYPE**

Government Corner ☐ Control ☐
 Meander ☐ Property ☒
 Rancho ☐ Other ☐

Date of Survey 10-19-2013**COORDINATES(Optional)**

N. _____
 E. _____
 Zone _____ NAD27 ☐ NAD83 ☐
 NAD83 Epoch _____
 Elev. _____
 Vert. Datum: NGVD29 ☐ NADV88 ☐
 Meas. Units: Metric ☐ Imperial ☐

Corner - Left as found ☐ Found and tagged ☐ Established ☒ Reestablished ☐ Rebuilt ☐

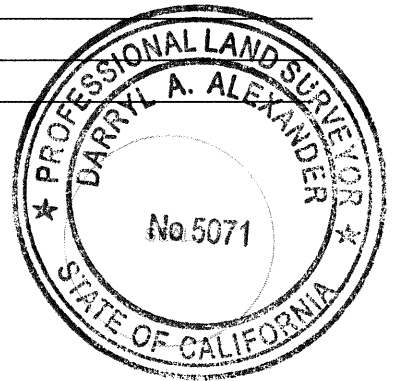
Identification and type of corner found: Evidence used to identify or procedure used to establish or reestablish the corner:

SEE SHEET 2

A description of the physical condition of the monument as found and as set or reset:

SEE SHEET 2**SURVEYOR'S STATEMENT**

This Corner Record was prepared by me or under my direction in conformance with
 the Land Surveyor's Act on July 8, 2014.

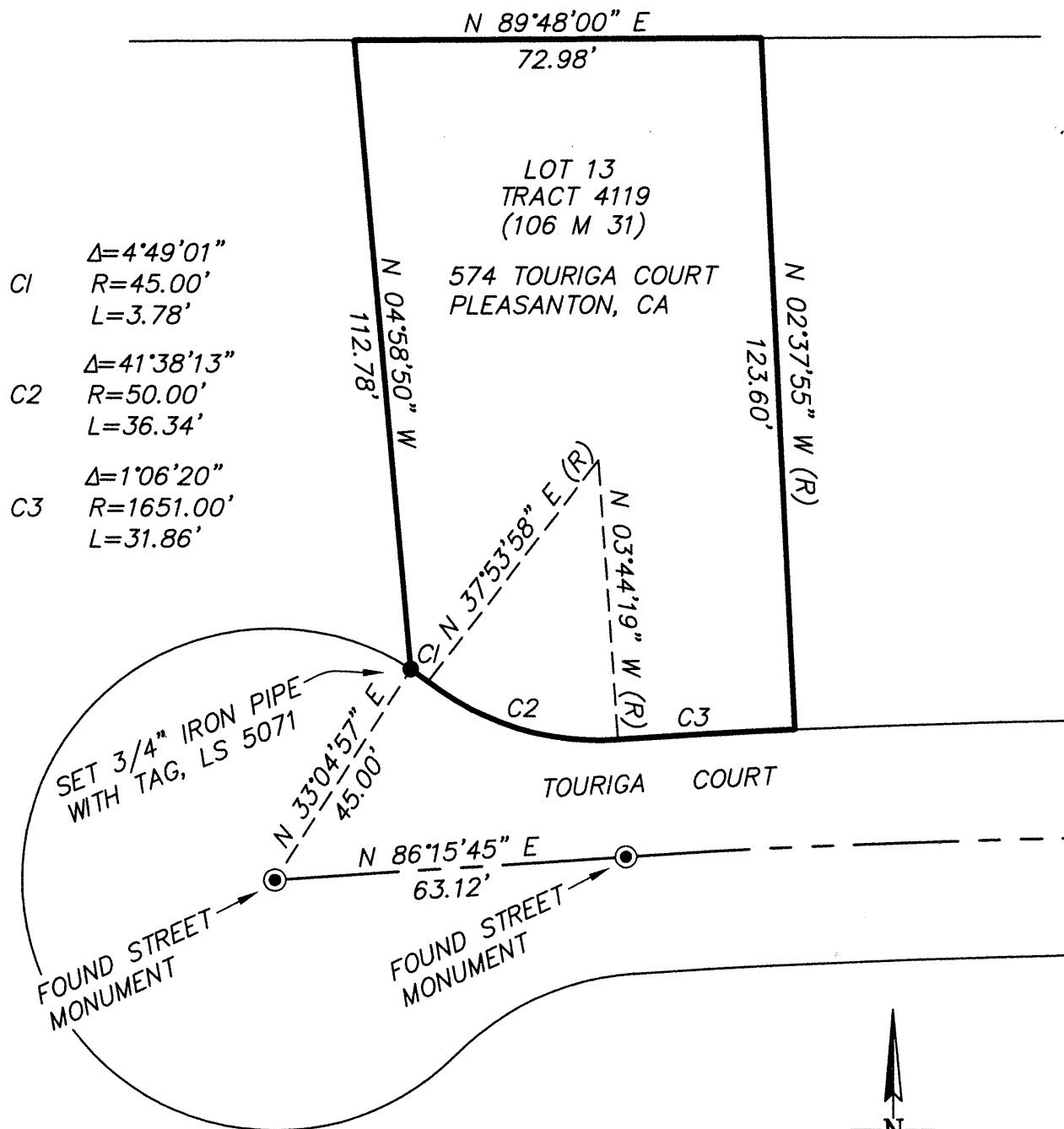
Signed Darryl A. Alexander P.L.S. or R.C.E. No.: PLS 5071**COUNTY SURVEYOR'S STATEMENT**

This Corner Record was received 7-9-14 and examined
 and filed 7-13-14.

Signed Russell R. Penland P.L.S. or R.C.E. No.: 5726Title County Surveyor

County Surveyor's Comment _____

UF1207



BASIS OF BEARINGS
THE BEARING N 86°15'45" E OF THE MONUMENTED
LINE OF TOURIGA COURT AS SHOWN ON THE
MAP OF TRACT 4119 (106 M 31)

