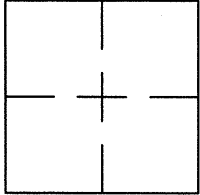


## CORNER RECORD

Document Number CR 9666City of EDEN TOWNSHIPCounty of ALAMEDA, CaliforniaBrief Legal Description PIN MONUMENT LOCATED WITHIN BAYWOOD AVE.

## CORNER RECORD

Government Corner ☐ Control ☒  
 Meander ☐ Property ☐  
 Rancho ☐ Other ☐  
 Date of Survey 12/28/16

COORDINATES  
(Optional)

N. 2075447  
 E. 6104190  
 Zone \_\_\_\_\_ Datum \_\_\_\_\_  
 Elev. \_\_\_\_\_

Corner — Left as found ☒ Found and tagged ☐ Established ☐ Reestablished ☐ Rebuilt ☐

Identification and type of corner found: Evidence used to identify or procedure used to establish or reestablish the corner:  
FOUND PIN IN CONCRETE IN MONUMENT WELL.

SEE CR 8941

THIS POINT WAS FOUND IN GOOD CONDITION AFTER A CONSTRUCTION PROJECT IN THE VICINITY.

A description of the physical condition of the monument as found and as set or reset: \_\_\_\_\_

FOUND AND SET POINTS AS SHOWN ON PAGE 2.

THE TIES SHOWN HEREON ARE FOR THE PURPOSE OF PERPETUATING FOUND MONUMENTATION.

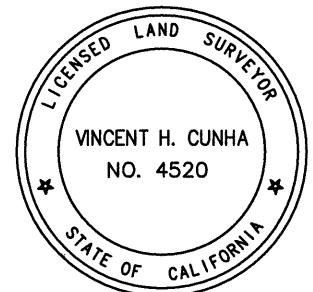
NO CLAIM IS MADE AS TO THE RELATIONSHIP OF THE POINTS OR LINES SHOWN HEREON TO

TRUE BOUNDARY LOCATIONS.

## SURVEYOR'S STATEMENT

This Corner Record was prepared by me or under my direction in conformance with  
 the Land Surveyors' Act on JANUARY 3, 2017.

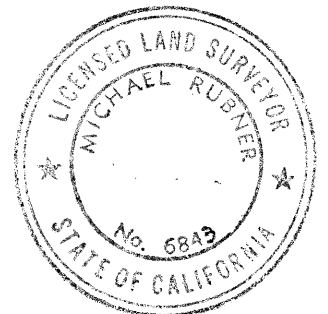
Signed Vincent H. Cunha L.S. Number LS 4520  
VINCENT H. CUNHA



## COUNTY SURVEYOR'S STATEMENT

This Corner Record was received 25 JANUARY 2017 and examined  
 and filed 24 FEBRUARY 2017.

Signed Michael Rubner Title COUNTY SURVEYOR



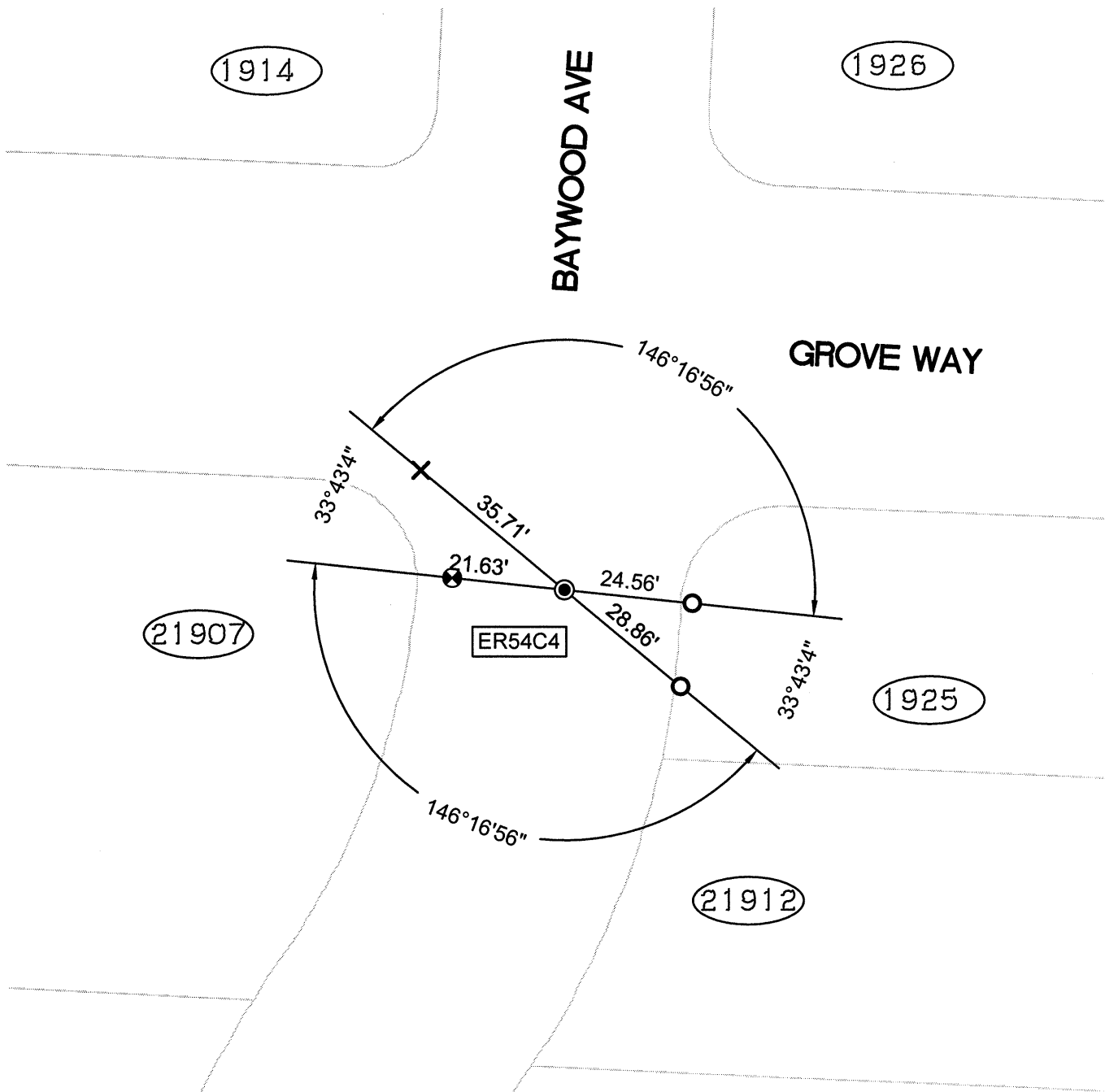
County Surveyor's Comment \_\_\_\_\_

SPEC-2300-Post

SCALE: 1"=30'

## LEGEND

- FOUND IRON PIN IN CONCRETE IN MONUMENT WELL
- ⊗ FOUND CUT CROSS IN WALK
- ✕ FOUND CUT CROSS IN CURB
- ⊠ FOUND MAG AND SHINER
- FOUND REBAR & CAP STAMPED "CEI RP"
- AA##A# ALAMEDA COUNTY MONUMENT ID
- 19592 REFERENCE STREET ADDRESS



216153-Baywood-CR03post