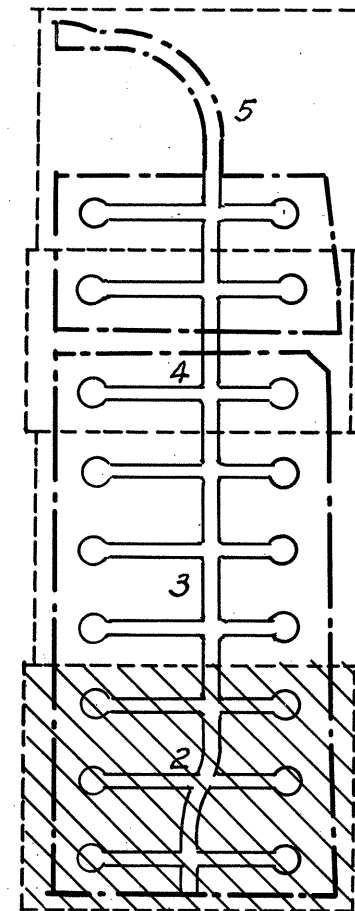


Alameda County Flood Control and Water Conservation District

FREWAY

NIMITZ



SHEET KEY

Concrete Monuments to be set indicated thus: ©
Existing Monuments indicated thus: •
Basis of Bearings: Tract 2337
Building Setback Lines to conform to the Zoning Ordinance of the City of Fremont as modified by PUD-65-2, dated May 10, 1965.
P.E. = Planting Easement
S.D.E. = Storm Drain Easement
P.U.E. = Public Utilities Easement.

Tract
2743

TRACT 2743 SUNDAL MANOR UNIT NO. 13 CITY OF FREMONT

ALAMEDA COUNTY, CALIFORNIA
L. CEDRIC MACABEE CIVIL ENGINEER
SCALE: 1"=50'
JULY 1965
Sheet 2 of 5 Sheets