

1. ALL FLUORESCENT FIXTURES SHALL HAVE ELECTRONIC BALLASTS WITH 20% OR LESS THD.
2. CONTRACTOR SHALL PROVIDE ALL REQUIRED HARDWARES, BRACKETS, ETC. FOR A COMPLETE INSTALLATION.
3. ALL LIGHTING FIXTURES SHALL BE SUPPORTED PER NEC 410-36(B). SEE DETAIL, SHEET 4 / E-4-00.
4. CONTRACTOR SHALL INSTALL ALL LIGHTING FIXTURES INCLUDING OWNER-FURNISHED FIXTURES.
5. ALL FIXTURE BALLASTS SHALL BE U.L. LISTED.
6. G.C. SHALL INSTALL OWNER SUPPLIED LED & CUT TO PROPER LENGTH
7. ALL MULTI-WIRE BRANCH CIRCUITS TO HAVE SEPARATE NEUTRALS TO MEET THE REQUIREMENTS OF NEC 410.130(4)(B).
8. ALL FLUORESCENT FIXTURES SHALL HAVE INTEGRAL DISCONNECTING MEANS PER NEC 410.130(G)(1).
9. ALL CIRCUITRY SHOWN WITHOUT TICKS SHALL HAVE (2) WIRES PLUS EQUIPMENT GROUNDING CONDUCTOR.
10. 'NL' DESIGNATION INDICATES NIGHT LIGHT ON UNSWITCHED CIRCUIT.
11. CONTRACTOR TO ENSURE THAT LEFT OVER DISTANCE FOR EXTERIOR FIXTURES SHALL BE EQUAL ON BOTH SIDES; AND SHALL NOT TO HAVE ANY GAP BETWEEN THE LIGHTING FIXTURE.
12. REFER TO LIGHTING CONTROL DETAIL, THIS SHEET 5 / E-101.

1. SWITCHBANK 'A'. REFER TO SCHEDULE THIS SHEET (4 / E-101).
2. ROUTE CIRCUITS THROUGH ROOM CONTROLLERS TO LIGHTING CONTROL PANEL (SWITCH LEGS AS NOTED IN LOWER CASE). REFER TO WIRING DIAGRAM (1 / E-402) FOR MORE INFORMATION.
3. ROUTE THROUGH CONTACTS IN HOOD CONTROL PANEL 'M4' FOR CIRCUIT POWER. REFER TO DETAILS, SHEETS 3 / E-401.
4. PROVIDE SEPARATE UNSWITCHED HOT CONDUCTOR (SAME CIRCUIT, NOT CONTROLLED BY LIGHTING CONTROLS) TO EMERGENCY FIXTURE BATTERY TRIGGER LEADS.
5. DUPLEX RECEPTACLE AT SOFFIT FOR LED ROPE. INSTALL ON BACK OF BULKHEAD ABOVE CEILING. REFER TO DETAILS, SHEET A-403 FOR MORE INFORMATION.
6. WALK-IN COOLER LIGHT FIXTURES AND PILOT LIGHT SWITCH PROVIDED WITH COOLER. REFER TO 'COOLER EVAPORATOR COIL' WIRING DIAGRAM, SHEET 8 / E-400.
7. WALK-IN FREEZER LIGHT FIXTURE AND PILOT LIGHT SWITCH PROVIDED WITH FREEZER. REFER TO 'FREEZER LTG AND DOOR HEATER WIRING DIAGRAM', SHEET 10 / E-400.
8. REFER TO 'EXHAUST FAN CONTROL DIAGRAM', SHEET 5 / E-400, FOR MORE INFORMATION.
9. FIXTURES THIS ROOM SHALL BE LOCALLY SWITCHED.
10. LIGHTING INVERTER TO BE MOUNTED ABOVE THE ELECTRICAL PANELS, NEXT TO CEILING.
11. LED TRANSFORMER LOCATION, MOUNT ABOVE CEILING PER MANUFACTURE'S RECOMMENDATIONS.
12. MANAGER'S SWITCHBANK. REFER TO THIS SHEET (4 / E-101).
13. DIMMING CONTROL FOR FIXTURES WITHIN DAYLIGHTING AREA IS NOT REQUIRED PER ENERGY CODE C405.2.3(1). AREA HAS 150 WATTS OR LESS OF GENERAL LIGHTING.

## LIGHTING GENERAL NOTES

2

#

## LIGHTING KEYED NOTES

3

NOT TO SCALE

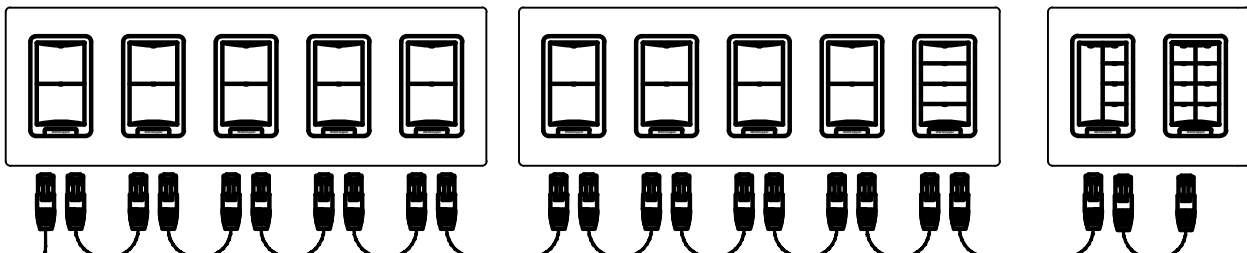
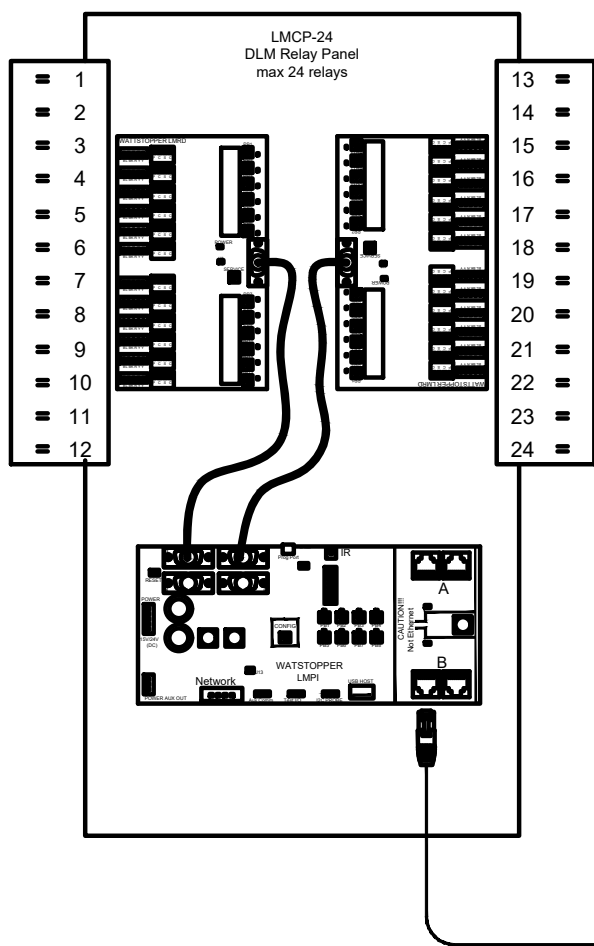
E-101

NOT TO SCALE

E-101

### 24 Relay Control Panel

LMCP-24 units have up to 24 SPST Plug Load rated WattStopper HDR relays. Each HDR can control a 20A, 120/277/347V, 50/60 Hz circuit. Panel has 4 Cat 5e DLM ports (via 2 separate networks that each provide 250mA 24VDC) to power DLM Cat 5e devices. Panel Enclosure is 31.38" H x 23.88" W x 4.5" D



LMCP 24 RELAY PANEL		
RELAY	ZONE	CIRCUIT
1	Ext. Bldg. Signs/Logo	B-1
2	Ext. Parking Lot Lights	B-3
3	Ext. Parking Lot Lights	B-5
4	Ext. Parking Lot Lights	B-17
5	Ext. Parking Lot Lights	B-31
6	Ext. Monument Sign	B-21
7	Ext. Menu Board	B-25
8	Ext. Order Screen	B-27
9	Ext. Sconce/Canopy Lts.	B-23
10	Ext. Light Fins	B-19
11	a Kitchen & Prep	A-45
12	b Kitchen & Prep	A-45
13	c Show Window Recpts.	A-49
14	d1,d2,d3,d4 Menu, LED Accents	A-1
15	e Serving Line Soffit	A-1
16	f1, f2 Dining Pendants	A-47
17	g Interior Dining	A-47
18	h Beverage Couter	A-47
19	i Decorative Lighting	A-47
20	RR Lts. and Exh. Fans	A-63
21	SPACE	
22	SPACE	
23	SPACE	
24	SPACE	

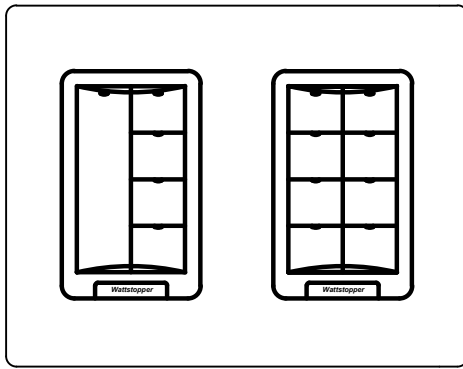
## LIGHTING CONTROL PANEL AND SCHEDULE

5

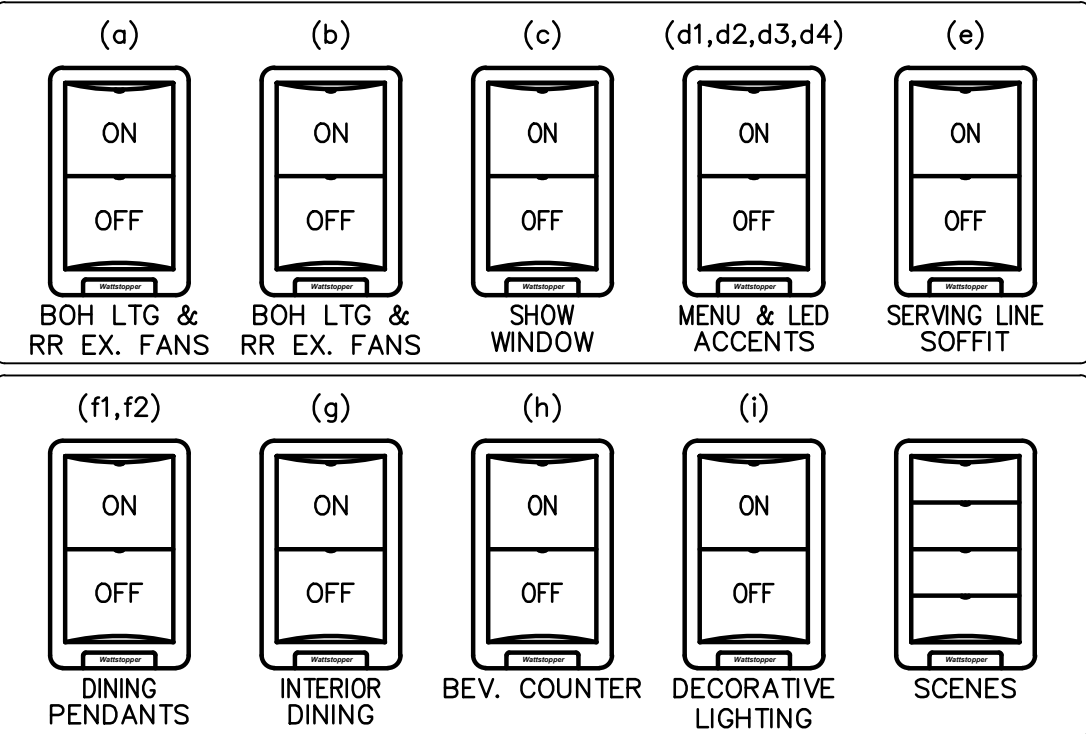
NOT TO SCALE

E-101

### MANAGER'S SWITCHBANK



NOTE:  
CONTRACTOR TO INSTALL (2) 5 GANG SWITCH BOXES AS SHOWN BELOW.  
DO NOT INSTALL SEPERATE/INDIVIDUAL BOXES FOR EACH SWITCH.



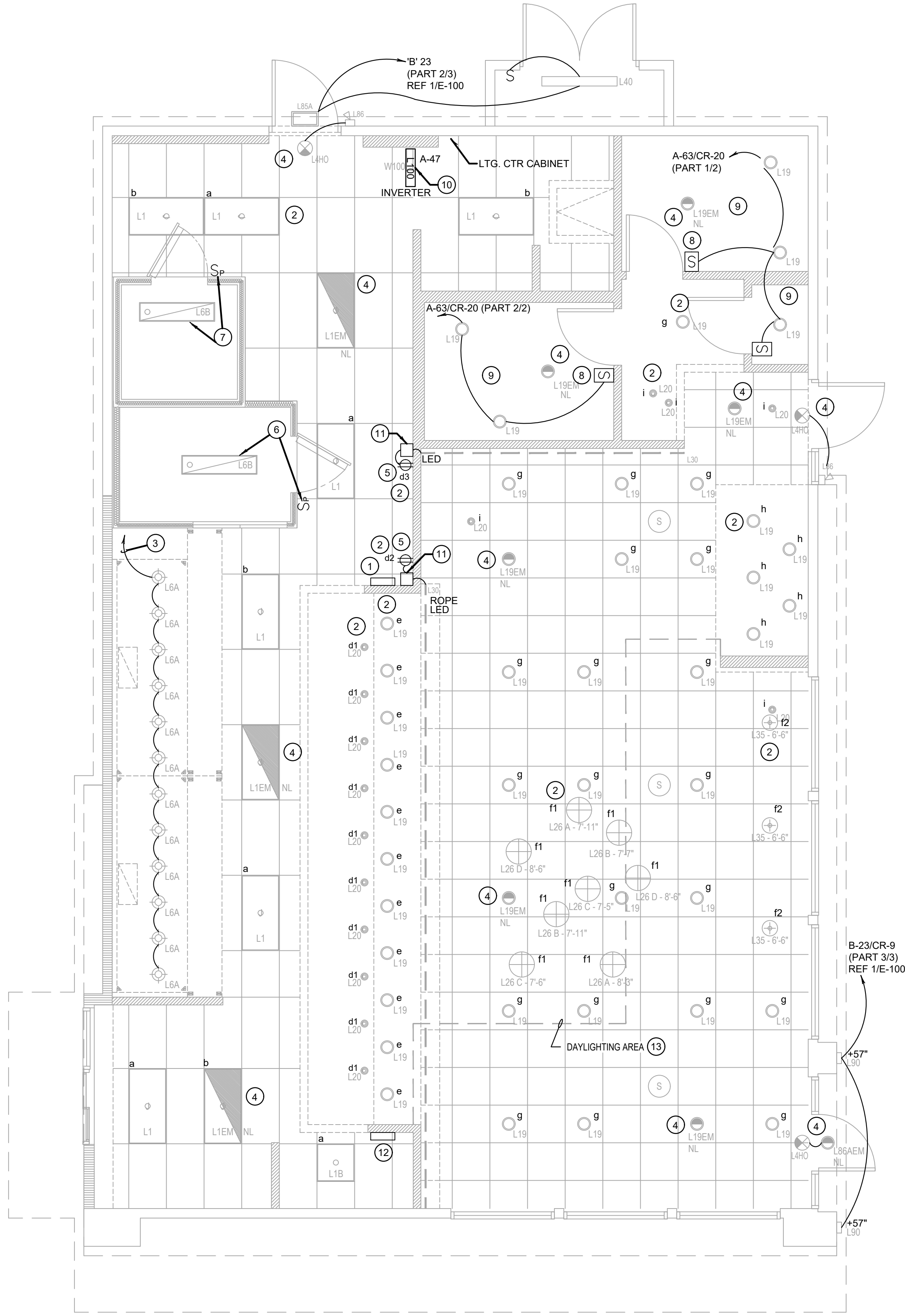
SWITCHBANK SCHEDULE 'A'				
TAG	SWITCH TYPE	AREA SERVED / SWITCH LABEL	CIRCUIT	LOAD
a	LMSW-102	BACK-OF-HOUSE	A-45/CR-11	180 VA
b	LMSW-102	BACK-OF-HOUSE	A-45/CR-12	150 VA
c	LMSW-102	SHOW WINDOW RECEP	A-49/CR-13	540 VA
d	LMSW-102	MENU, LED ACCENTS, VEG LTS.	A-1/CR-14	190 VA
e	LMSW-102	SERVING LINE SOFFIT	A-1/CR-15	154 VA
f	LMSW-102	DINING PENDANTS	A-47/CR-16	44 VA
g	LMSW-102	INTERIOR DINING	A-47/CR-17	350 VA
h	LMSW-102	BEVERAGE COUNTER	A-47/CR-18	70 VA
i	LMSW-102	DECORATIVE LIGHTING	A-47/CR-19	55 VA
j	LMSW-104	SCENES		

## LIGHTING SWITCHBANK SCHEDULE

4

NOT TO SCALE

E-101



## LIGHTING FLOOR PLAN

1

Scale: 1/4"=1'-0"

E-101



PANDA RESTAURANT GROUP INC.

1683 Walnut Grove Ave.  
Rosemead, California  
91770

Telephone: 626.799.9898  
Facsimile: 626.372.8288

All ideas, designs, arrangement and plans indicated or represented by this drawing are the property of Panda Express Inc. and were created for use on this specific project. None of these ideas, designs, arrangements or plans may be used by or disclosed to any person, firm, or corporation without the written permission of Panda Express Inc.

### REVISIONS:

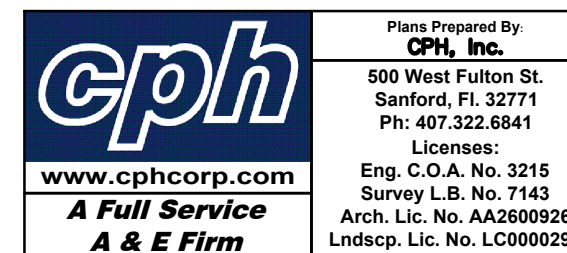
### ISSUE DATE:

1	ISSUED FOR PERMIT	06-11-18
2	ISSUED FOR BID	08-09-18

DRAWN BY: E.J.P.

PANDA PROJECT #: S8-19-D5834

ARCH PROJECT #: P7323



## PANDA EXPRESS

WARM & WELCOME 2200  
BIG BEND RD & SUMMERFIELD CROSSING BLVD  
RIVERVIEW, FL 38-19-D5834

# E-101

LIGHTING FLOOR PLAN

TRUE WARM & WELCOME 2200