



5. Data sheets

SHORT COUPLE SHAFTS

Series:

GK

Flanges (SAE, KV, etc.) see data sheets GF

Size		GK05300	GK05800	GK07700	GK09000	GK10000	GK13000	GK15000	GK17000	GK18000	GK20000
Mmax 1)	Nm	6300	6800	7700	9000	10000	13000	16000	17000	18000	20000
MF 2)	Nm	8200	9000	10500	11500	13000	17000	19000	22500	23500	26000
A	mm	150	180	150	165	180	180	225	180	225	180
F 3)	mm	8	8	8	8	8	8	10	10	8	10
E	mm	12	14	12	14	16	16	16	16	16	16
β 4)	°	35	35	35	35	35	35	35	30	24	30
B	mm	90	110	90	95	110	110	140	110	140	110
C	mm	3	3	3	3	3	3	3	3	5	3
D	mm	130	155,5	130	140	155,5	155,5	196	155,5	196	155,5
H 5)	mm	138	138	156	156	156	168	168	178	215	200
K	mm	55*2,5	55*2,5	65*2,5	65*2,5	65*2,5	75*2,5	75*2,5	80*2,5	80*2,5	90*2,5
L1 6)	mm	490	490	505	505	505	570	570	570	650	590
L1 6)	mm	578	578	615	615	615	660	660	700	715	665
L2 7)	mm	40	40	40	40	40	40	40	40	80	60
L2 8)	mm	110	110	110	110	110	110	110	150	110	140
G 9)	kg	23,8	25,5	33,6	35,4	35,9	45,8	51,6	57	52	66
Jm 10)	kg cm*2	374,00	590,00	690,00	730,00	849,00	990,00	1340,00	1530,00	1670,00	2247,00
GI 11)	Nm	2300	2300	3100	3100	4200	4200	4200	4600	4600	6900

1) Maximum permitted torque

2) Functional limited torque

3) No. of flange holes

4) Maximum permitted deflection angle, max 35° on request

5) Boring diameter

6) Compressed length. Available are: length from L1 min

to L1 max.

7) Extension of L1 min

8) Extension of L1 max

9) Weight of L1 max

10) Moment of inertia of L1 max

11) Joint performance factor

U.-Joint / AE-Code				Series: ZK	
ZK01	ZK02/1	ZK02/2	ZK02/4		
ZK03	ZK04/1	ZK04/2	ZK04/4		
ZK05	ZK06	ZK07	ZK08		
ZK09	ZK10	ZK11	ZK12		
ZK13	ZK16	ZK18	ZK19		
ZK20					

Art-Nr/Article code: 202 11 101

14.07.00

J.B.

Parts not listed on request

Reprinting and copies of the catalogue are not allowed, also for single sheets.

Bolting Sets

Companion Flanges

Flange Yokes

Flange Joints

Intermediate Tubeshafts

Intermediate Shafts

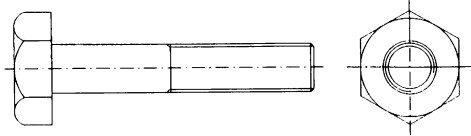
Tubeshafts without length compensation

Short Couple Shafts

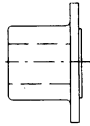
Propshafts with length compensation

Product Range

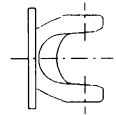
(From Germany)



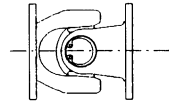
FV



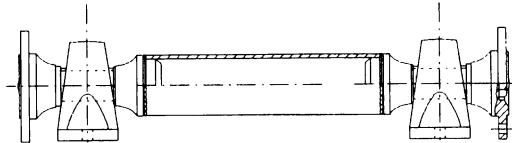
AF



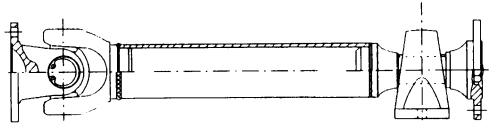
GF



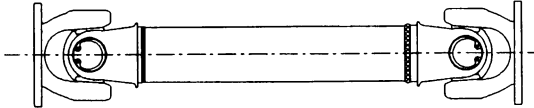
FG



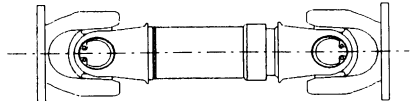
ZR



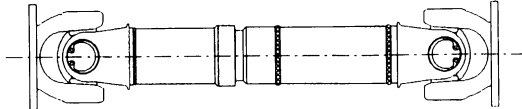
ZW



RW



GK



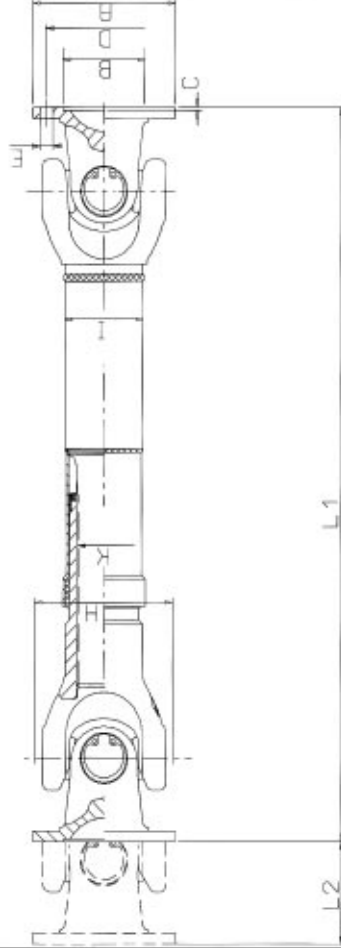
GW



5. Data sheets

PROPSHAFTS with length compensation

Series: GW



Design sleeve code 00150 - 00750

Flanore (SAE, K'V, etc.) see data sheets; GF

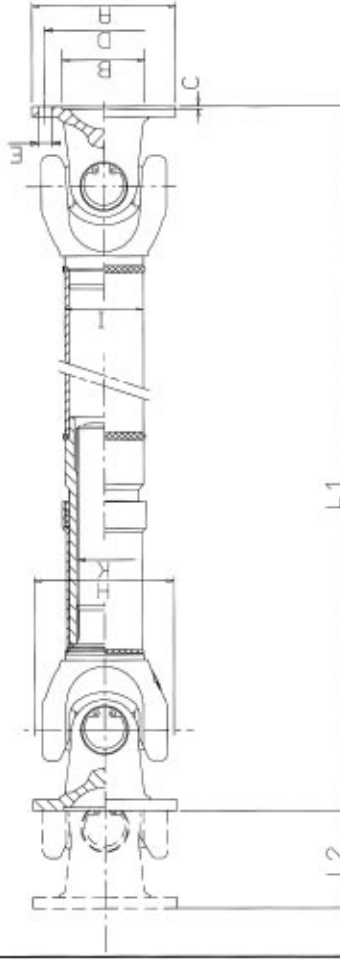
Size		GW00150	GW00250	GW00400	GW00750	GW01250	GW02500	GW03000	GW03500	GW04000	GW05000
Mmax 1)	Nm	150	250	400	760	1250	2500	3000	3500	4000	5000
MF 2)	Nm	250	350	550	1000	1700	3400	4000	4600	5300	5500
A	mm	58	65	75	90	100	120	120	160	120	150
F 3)		4	4	5	4	6	8	6	8	8	8
E	mm	5		6	8	8	8	10	12	10	12
B 4)	°	30	25	25	20	35	35	35	18	35	35
B	mm	30	35	42	47	57	75	75	90	75	90
C	mm	1.5	1.7	2	2.5	2.5	2.5	2.5	3	2.5	3
D	mm	47	52	62	74.5	84	101.5	101.5	130	101.5	130
H 5)	mm	52	62	73	85	100	117	116	116	125	125
I	mm	281.5	382.5	492	502	503	703	703	703	803.5	803.5
K	mm	2219	2922	3515	352	352	492.5	452.5	452.5	522.5	522.5
L 1 6)	mm	245	280	315	365	400	500	500	485	630	640
G 7)	mm	35	40	40	45	110	120	120	120	110	110
G 8)	kg	1.3	2.1	2.8	4.7	6.6	13.4	13.4	13.9	17.8	19.3
GR 9)	kg	0.068	0.219	0.187	0.236	0.348	0.500	0.500	0.500	0.660	0.660
Jm 10)	kg cm ²	3.41	8.56	11.24	30.61	54.05	159.50	136.00	142.00	228.11	290.00
JmR 11)	kg cm ²	0.17	0.66	0.68	1.38	1.93	5.70	5.70	5.70	9.70	9.70
I 12)	Nm	60	100	170	350	600	950	950	960	1650	1650

- 1) Maximum permitted torque
- 2) Functional limited torque
- 3) No. of Hange holes
- 4) Maximum permitted deflection angle, max 35° on request
- 5) Sizing diameter
- 6) Shortest compressed length, greater length at order
- 7) Min. length compression, other length at order
- 8) Weight of 1.0 mm
- 9) Weight of 100 mm tube
- 10) Moment of inertia of 1.1 mm
- 11) Moment of inertia of 100 mm tube
- 12) Joint performance factor

5. Data sheets

PROPSHAFTS with length compensation

Series: GW



Design voka shaft 01250 - 33000

Fluores (SAF KV, etc.) can data change GE

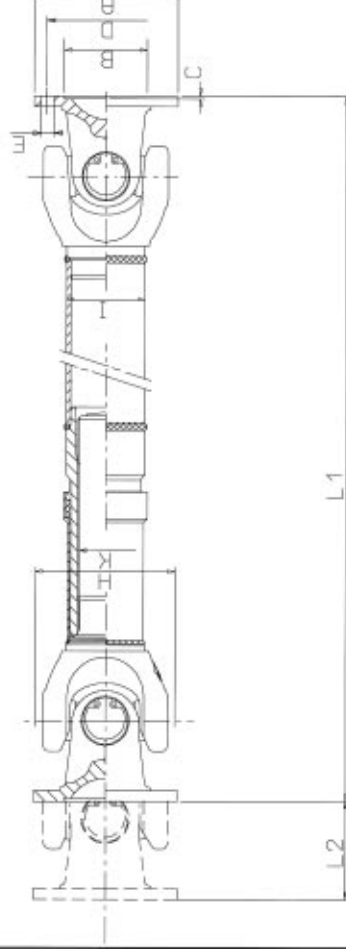
Bauart u. -größe		GW22000	GW24000	GW25000	GW26000	GW30000	GW35000
Mmax 1)	Nm	22500	24000	25000	26000	30000	33000
MF 2)	Nm	20500	32000	33000	34000	39000	43000
	mm	225	250	225	250	285	
F 3)		8	8	8	8	8	8
E	mm	16	18	16	18	18	20
β 4)	°	30	25	24	24	20	20
B	mm	140	140	140	140	140	175
C	mm	5	6	5	6	6	7
D	mm	198	218	196	218	218	245
H 5)	mm	200	204	215	215	250	250
I.	mm	140/5	140/5	143/7,5	143/7,5	162/9	162/9
K	mm	90/2,5	90/2,5	90/2,5	99/2,5	100/94	100/94
L 1 6)	mm	850	890	800	800	860	860
L 2 7)	mm	150	150	110	110	110	110
G 8)	kg	74,5	77,57	71,76	72,78	119,3	125
GR 9)	kg	1,665	1,665	2,506	2,506	3,4	3,4
Jm 10)	kg cm ²	2737,54	2943,33	3613,07	3623,07	9230	9230
JmR 11)	kg cm ²	75,97	75,97	115,38	115,38	199,42	199,42
Il 12)	Nm	6800	6800	10500	10500	12900	12900

1) Maximum permitted torque	7) Min. length compensation, other length at order
2) Functional limited torque	8) Weight of L1 min
3) No. of hange holes	9) Weight of 150 mm tube
4) Maximum permitted deflection angle, max 35° on request	10) Moment of inertia of L1 min
5) Sealing diameter	11) Moment of inertia of 150 mm tube
6) Shortest compressed length, greater length at order	12) Joint performance factor

5. Data sheets

PROPSHAFTS with length compensation

Series: GW



Design yoke shaft 01250 - 330000

Flannery / SAF KV etc \ see data sheets GF

Size		GW06300		GW06800		GW07700		GW09000		GW13000		GW17000		GW18000		GW20000	
		Mmax 1)	Nm	6300	6800	7700	9000	10000	13000	16000	17000	18000	20000				
A	M 2)	Nm	8200	9000	10500	11500	13000	15000	16000	17000	18000	22500	23000	26000			
	F 3)	mm	150	160	130	165	180	180	225	150	225	180	225	180			
	A	mm	8	8	8	8	8	8	10	10	8	10	8	10			
	E	mm	12	14	12	14	16	16	16	16	16	16	16	16			
	B 4)	mm	35	35	35	35	35	35	35	35	30	30	24	30			
	B	mm	90	110	90	95	110	110	140	140	110	140	110	110			
	C	mm	3	3	3	3	3	3	3	3	3	3	3	3			
	D	mm	130	155,5	130	140	155,5	155,5	166	166	155,5	166	155,5	166			
	H 5)	mm	138	138	156	156	156	168	168	178	178	215	215	200			
	I	mm	85*5	85*5	82*5,5	82*5,5	82*6,5	100*6	104*8	111,5*8,75	111,5*8,75	140*5	140*5	140*5			
	K	mm	55*2,5	55*2,5	65*2,5	65*2,5	65*2,5	75*2,5	75*2,5	80*2,5	80*2,5	80*2,5	80*2,5	80*2,5			
	L1 6)	mm	670	670	700	700	700	750	750	800	800	785	850	850			
L2 7)	mm	110	110	110	110	110	110	110	150	150	110	150	150				
L3 8)	mm	24,84	26,54	33,19	34,29	36,29	47,22	53,46	54,5	54,5	56	56	71,5				
GR 9)	kg	0,066	0,066	1,370	1,370	1,370	1,381	1,894	1,740	1,740	1,740	1,740	1,665				
Jm 10)	kg cm ²	308,73	537,73	678,46	743,46	854,46	898,87	1350,00	1510,00	1510,00	1875,50	2286,05	2286,05				
JmR 11)	kg cm ²	15,84	15,84	25,18	25,18	25,18	30,65	40,34	48,00	48,00	48,00	48,00	76,97				
GI 12)	mm	2300	2300	3100	3100	3100	4200	4200	4500	4500	4500	4500	6800				

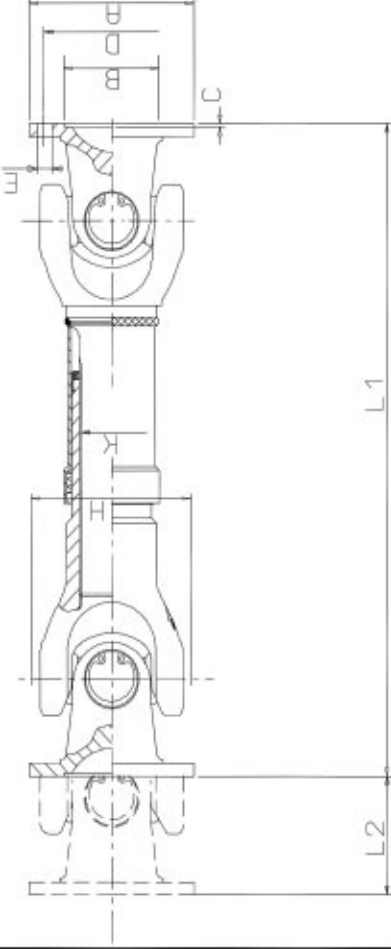
- 1) Maximum permitted torque
- 2) Functional limited torque
- 3) No. of flange holes
- 4) Maximum permitted deflection angle, max 35° on request
- 5) Swing diameter
- 6) Shortest compressed length, greater length on order

- 7) Min. length compensation, other length at onset
- 8) Weight of L1 min
- 9) Weight of 100 mm tube
- 10) Moment of inertia of L1 min
- 11) Moment of inertia of 100 mm tube
- 12) Joint performance factor

5. Data sheets

SHORT COUPLE SHAFTS

Series: GK



Flanges (SAE, KV, etc.) see data sheets GF

[illegible]

- 1) Maximum permitted torque
- 2) Functional limited torque
- 3) No. of hinge bolts
- 4) Maximum permitted deflection angle, max 35° on request
- 5) Sling diameter
- 6) Compressed length. Available are length from L1 min to L1 max.

- 7) Extension of L1 in
- 8) Extension of L1 max
- 9) Weight of L1 max
- 10) Moment of inertia of L1 max
- 11) Joint performance factor