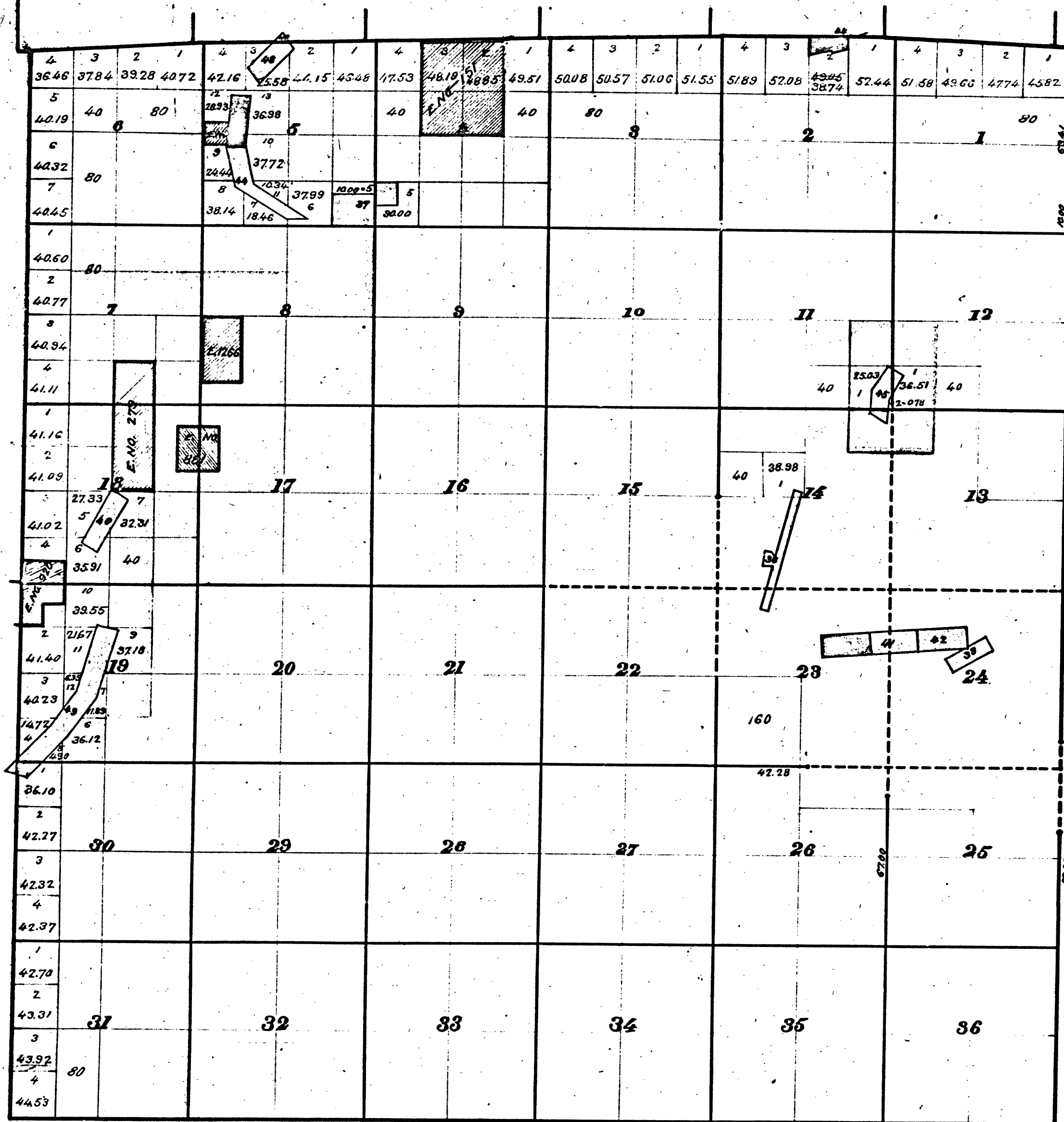


Township N<sup>o</sup> 5 North, Range N<sup>o</sup> 12 East, Mount Diablo Meridian.



Mineral Land returned Jan. 18 '71.

EN <sup>o</sup>	LN <sup>o</sup>	NAME	PATENTED	NO.
37	64	RED HILL PLACER GOLD MINE	July 16 72	387
287	38	WET GULCH & CHAPARRAL Q. M. & M.B.	Aug 14 78	2945
362	39	ALPINE QUARTZ MINE	Mch. 8 76	1876
1609	40	VINCENT		
1610	41	ALAMEDA		
1097	42	PINE TREE		
899	43	TIGER	Nov 17 88	4044
626	44	ESPERANCE GOLD QUARTZ MINE	Feb. 28 80	3784
726	45	WHISKEY SLIDE		
693	46	LAMPHEAR	Jan. 15 80	3662
1418	47	MAMMOTH		
	48	BRYAN GOLD		
	49	EMPIRE GRAVEL MINE		
	50	BEGGAR QUARTZ MINE		

EN <sup>o</sup>	L.S.	PATENTED.	N <sup>o</sup>
151	.	Dec. 9. 73	701
278	.	May 4. 75	1329
363	.	Jan. 14. 76	1603
881	.	Sept. 18. 83	8154
926	.		
1266	.		

DEPARTMENT OF THE INTERIOR,  
GENERAL LAND OFFICE,  
Washington, D. C. 20540.  
I hereby certify that this is a true copy  
of the plat of official survey of the lands  
to which it relates, on file in this office.

*W. H. Sampson*  
Recorder, General Land Office.

41 429

9

CHAINS

CHAINS

10 20 40 60 80 120

T 5 N R 12 E M D

BLM 242