

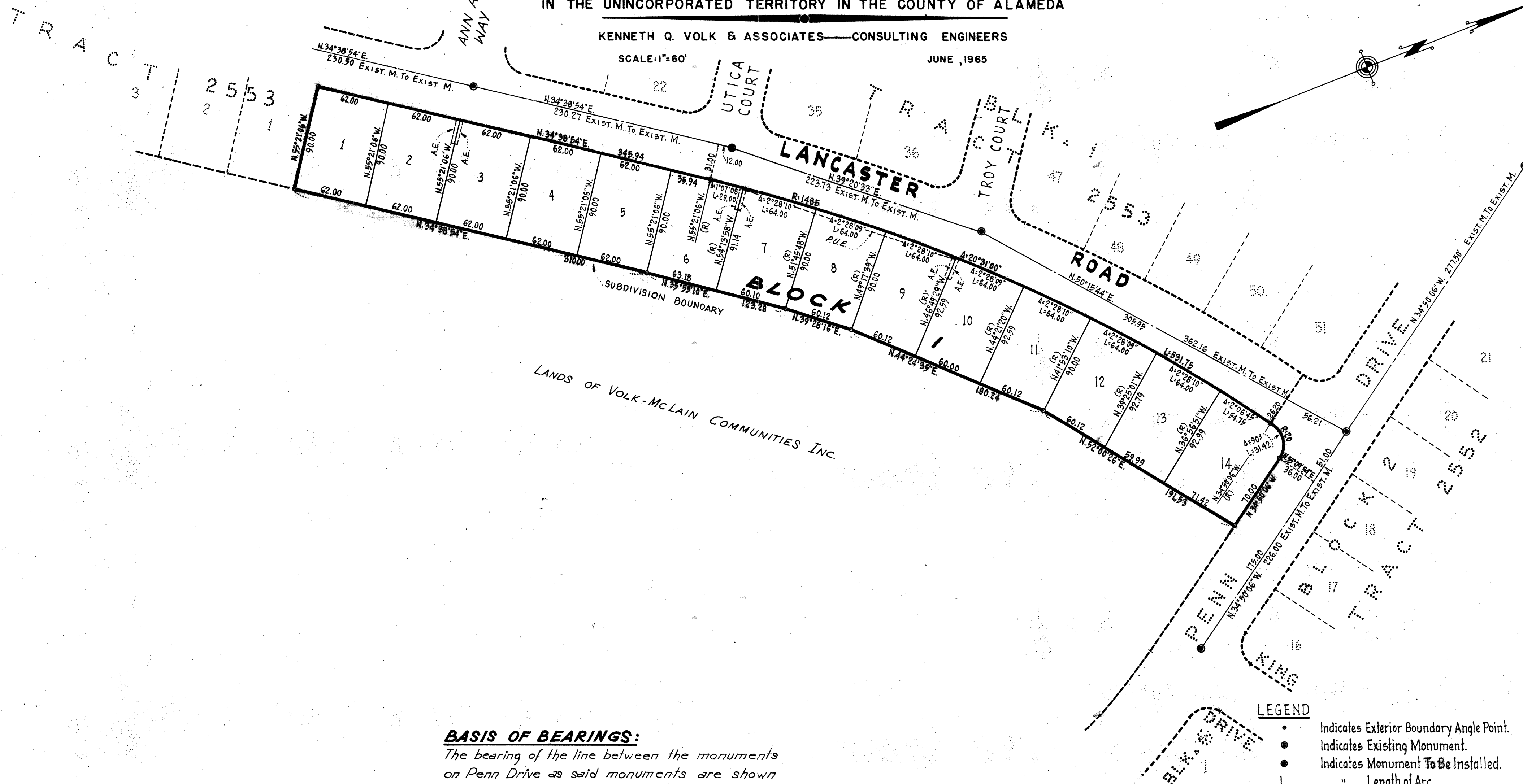
TRACT 2554

PLEASANTON TOWNSHIP, ALAMEDA COUNTY, CALIFORNIA
IN THE UNINCORPORATED TERRITORY IN THE COUNTY OF ALAMEDA

KENNETH Q. VOLK & ASSOCIATES—CONSULTING ENGINEERS

SCALE: 1"=60'

JUNE, 1965



BASIS OF BEARINGS:

The bearing of the line between the monuments on Penn Drive as said monuments are shown upon the map of Tract 2552, Pleasanton Township, Alameda County, California, Recorded February 24, 1965 in Book 49 at Pages 92 & 93, Serial N^o AX 24814, is taken as N. 34° 50' 06" W.

BUILDING SETBACK:

Building Setback lines to be as required by Ordinance Code of the County of Alameda Title 9, Chapter 2, and Amendments thereto.

LEGEND

- Indicates Exterior Boundary Angle Point.
- Indicates Existing Monument.
- Indicates Monument To Be Installed.
- L " Length of Arc.
- R " Radius of Arc.
- Δ " Central Angle of Arc.
- (R) " Radial Line.
- A.E. " Anchor Easement.
- P.U.E. " Public Utility Easement.

20' 2.5' Lot Line
Unless Otherwise Shown On Map.

AX 85271

SHEET 2 OF 2 SHEETS

AX 85271 Filed June 21st 1965 Book 50 Page 48

TRACT
2554